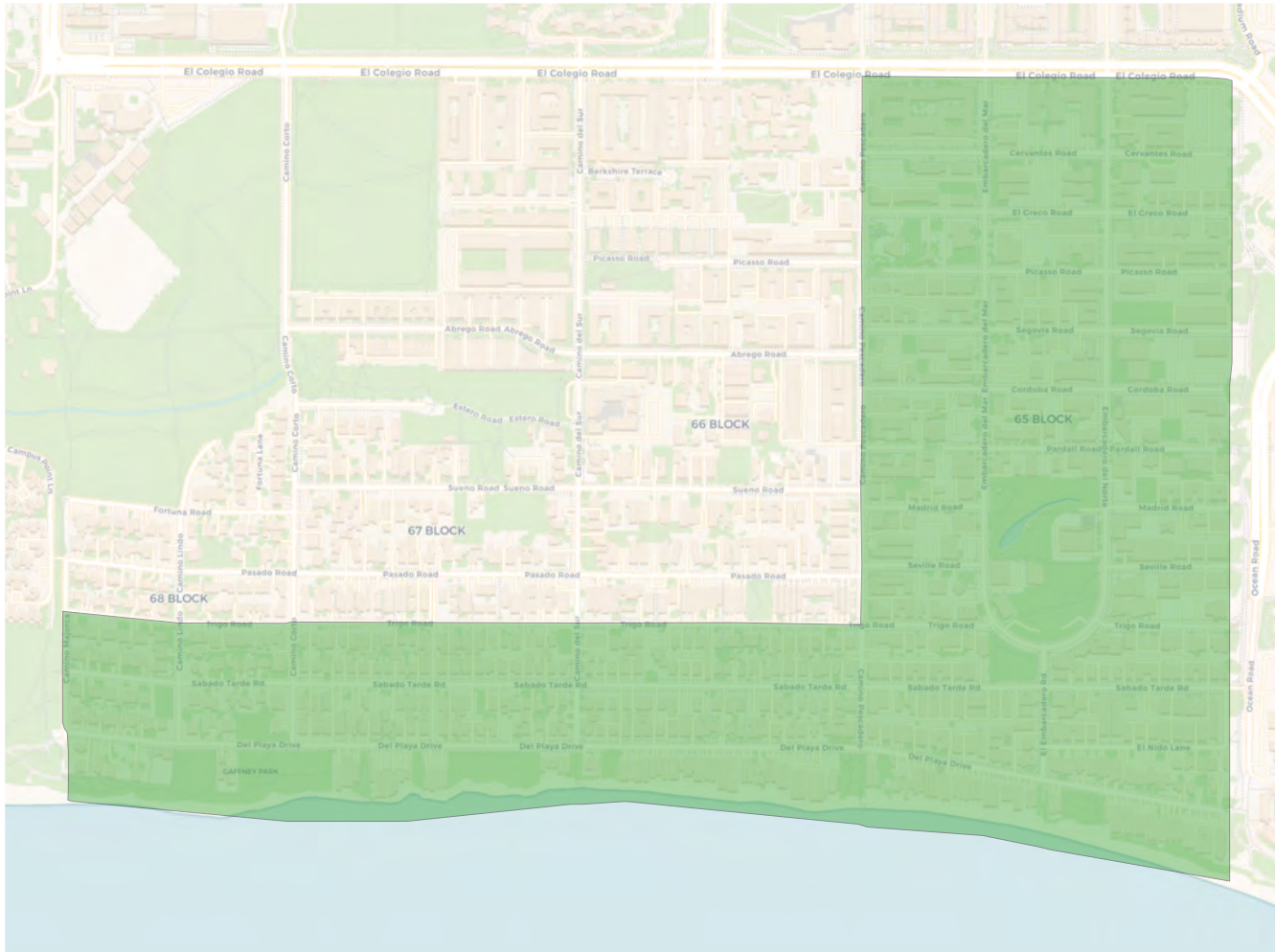
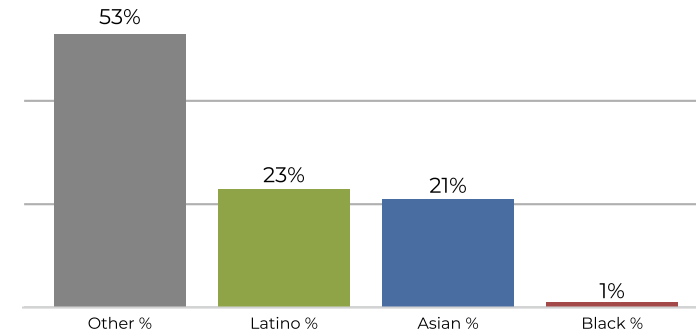


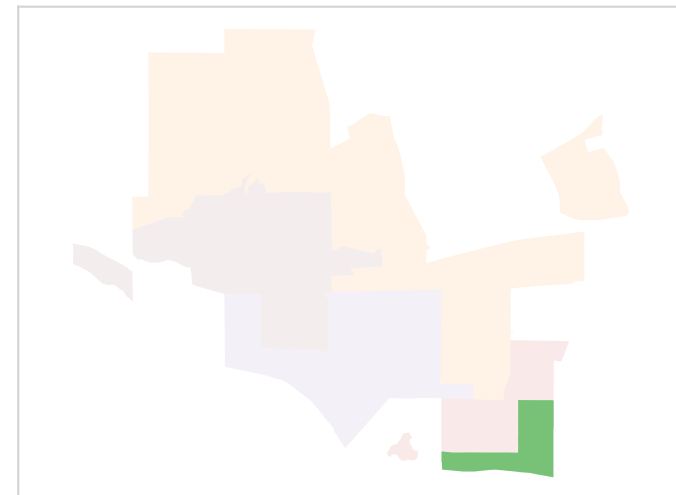
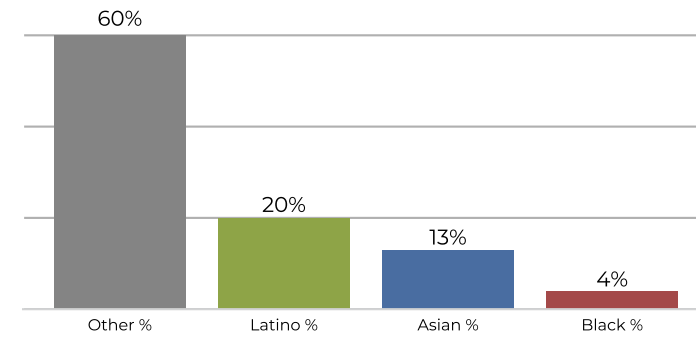
District 2



2020 Census



Citizen Voting Age Population



Population	Deviation	Deviation %	Other	Other %	Latino	Latino %	Asian	Asian %	Black	Black %
8,469	149	1.8%	4,529	53.5%	1,945	23.0%	1,837	21.7%	158	1.9%
Total CVAP	Other CVAP	Other CVAP %	Latino CVAP	Latino CVAP %	Asian CVAP	Asian CVAP %	Black CVAP	Black CVAP %		
7,960	4,847	60.9%	1,665	20.9%	1,064	13.4%	384	4.8%		