



- KEYED NOTES:**
- SERVICE ENTRANCE SECTION 'S.E.S.'. SEE ONE-LINE ON DIAGRAM ON SHEET A-E5.0.
  - RELOCATED UTILITY TRANSFORMER. SEE ONE-LINE DIAGRAM ON SHEET A-E5.0.
  - NEW 4 #4/0 XHHW-2 CU., 1 #2 CU., GND, 3°C.
  - PROVIDE SERVICE ENTRANCE RATED 600V, 200A, 3P DISCONNECT SWITCH 'DSA' WITH (3) FUSES IN NEMA 1 ENCLOSURE. SEE ONE-LINE DIAGRAM ON SHEET A-E5.0.
  - RUN 1-1/2" EMPTY CONDUIT WITH PULL STRING FOR FUTURE FEED. TERMINATE TO A VAULT. VERIFY LOCATION OF VAULT WITH SERVING UTILITY.
  - TERMINATE TO WHERE AND AS DIRECTED BY SERVING UTILITY.
  - J-BOX MOUNTED AT +48" A.F.F..
  - PROVIDE WEATHERPROOF J-BOX AND COMPLETE CONNECTION TO EXTERNALLY ILLUMINATED SIGNAGE. PROVIDE DISCONNECTING MEANS IN NEMA 3R ENCLOSURE AS REQUIRED BY C.E.C. HOMERUN WITH 2 #10 CU., 1 #10 CU., GND, 3/4"C. VERIFY EXACT LOCATION AND ELECTRICAL REQUIREMENTS WITH SIGN CONTRACTOR PRIOR TO START OF WORK.
  - NEW ELECTRICAL PANEL 'EV' FOR FUTURE ELECTRIC VEHICLE CHARGING STATION. SEE ONE-LINE DIAGRAM ON SHEET A-E5.0.
  - NEW 45KVA, 480V-12/208V, 3PH, 4W TRANSFORMER 'TEV' FOR FUTURE ELECTRIC VEHICLE CHARGING STATION. SEE ONE-LINE DIAGRAM ON SHEET A-E5.0.
  - EXISTING WEATHERPROOF J-BOXES FOR FUTURE ELECTRIC VEHICLE CHARGING STATION POINT OF POWER CONNECTION WITH COVER AND LABEL FOR INTENDED USE. ELECTRIC VEHICLE CHARGING STATION SHALL BE BY OTHERS AND UTILIZE THIS STUB-OUT FOR POWER CONNECTION.
  - EXISTING EMPTY CONDUIT WITH PULL WIRE FOR FUTURE ELECTRIC VEHICLE CHARGING STATION.
  - "ADD ALTERNATE" FOR BIDDING PURPOSES: (2) 2-1/2" EMPTY CONDUITS WITH PULL STRING TO WEATHERPROOF J-BOXES ON EAST EXTERIOR WALL OF EXISTING (OLD) ADMINISTRATION BUILDING.
  - "ADD ALTERNATE" FOR BIDDING PURPOSES: (2) 2-1/2" EMPTY CONDUITS WITH PULL STRING TO WEATHERPROOF J-BOXES ON EAST EXTERIOR WALL OF OPERATIONS BUILDING.
  - "ADD ALTERNATE" FOR BIDDING PURPOSES: (2) 2-1/2" EMPTY CONDUITS WITH PULL STRING TO WEATHERPROOF J-BOXES ON EAST EXTERIOR WALL OF EQUIPMENT GARAGE BUILDING.

- SITE NOTES:**
- LOCATIONS OF METER ASSEMBLY AND TELEPHONE MINIMUM POINT OF PRESENCE CABINET MUST BE COORDINATED WITH SERVING UTILITIES PRIOR TO START OF WORK.
  - TRENCHING ROUTES ARE NOT AVAILABLE AT THE TIME OF PRINTING. CONTRACTOR SHALL COORDINATE TRENCH ROUTING FROM SERVING UTILITIES.
  - ELECTRICAL CONTRACTOR SHALL PROVIDE THE SERVING UTILITIES A COMPLETE SET OF WORKING DRAWINGS WITHIN TWO WEEKS OF CONTRACT AWARD.

**UTILITY TRENCHING NOTE:**

CONTRACTOR SHALL COORDINATE TRENCHING WITH UTILITY COMPANIES. VERIFY USE OF COMMON TRENCH AND COMBINE RUNS WHEREVER POSSIBLE. ALL TRENCHING, BACK FILLING, CONDUITS, POLE RISERS, PULLBOXES AND CONDUCTORS REQUIRED TO PROVIDE ELECTRICAL SERVICE TO THIS PROJECT SHALL BE DEEMED PART OF THE ELECTRICAL CONTRACT.



Your environmental partner since 1954

**UCSB Campus**  
 Parking Lot 32  
 Santa Barbara, CA 93106  
 (p) 805 968-2617 (f) 805 562-8987

**ADMINISTRATION BUILDING**

**EDUARDO GALINDO ARCHITECT**

9733 W. SUNNYSLOPE LANE  
 PEORIA, ARIZONA 85345

480.751.8780 ed@egadesign.net

egadesign.net

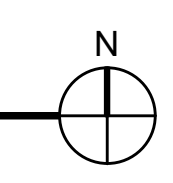


ISSUED	REV	DATE
DART Submittal		15 May 2015
Site Development Plan 1		23 June 2015
30% Schematic Design		30 Oct. 2015
Pre-App & Architectural Board of Review Submittal		23 Apr. 2016
Architectural Board of Review Submittal		25 Jan. 2017
Architectural Board of Review		10 OCT 2022
Building Permit Review		28 AUG 2023



06-24-23

**1 ELECTRICAL SITE PLAN**  
 SCALE: 1" = 20'-0"



**ELECTRICAL SITE PLAN**

SCALE 1" = 20'-0"

PROJECT NUMBER 40903

**A-E1.0**

DRAWING NUMBER

Plot Date: