

Goleta West Sanitary District 2023 Districting



September 5, 2023

Agenda

Things we will cover:

- Required Districting Criteria
- Traditional Districting Criteria (not required)
- Public Maps
- Visualizations
 - A, B & C
- Public Hearing Schedule
- Next Steps

Required Districting Criteria

Relatively equal population

- Constitutional
- Under 10% deviation

Federal Voting Rights Act

- Department of Justice: “Section 2 of the Voting Rights Act is a nationwide prohibition against voting practices and procedures, (including redistricting plans) that discriminate on the basis of race, color or membership in a language minority group.”

Required Districting Criteria

Relatively equal population: One-Person, One-Vote

Based on the 14th Amendment, Equal Protection Clause, a series of SCOTUS rulings established that 10% total deviation was considered the norm

- *Avery v. Midland County* (1968): SCOTUS ruled that local government districts had to be roughly equal in population.
- 10% deviation first mentioned in *Gaffney v. Cummings*, (1973)
- *Brown v. Thompson* (1983) stated that, as a general matter, plans with a maximum deviation of 10% fall within a “minor deviations” category.

Required Districting Criteria

Federal Voting Rights Act

The Voting Rights Act Section 2 is enforced when a jurisdiction meets certain preconditions:

- 1) A minority group must be sufficiently large and geographically compact to comprise a majority of the district;
- 2) The minority group must be politically cohesive (it must demonstrate a pattern of voting for the same candidates, also known as “bloc voting”); and,
- 3) A majority of voters vote sufficiently as a bloc usually to defeat the minority group’s preferred candidate.

Traditional Districting Criteria (not required)

Based on the California FAIR MAPS Act (ranked), these are traditional redistricting criteria used throughout the country and are considered norms of map drawing:

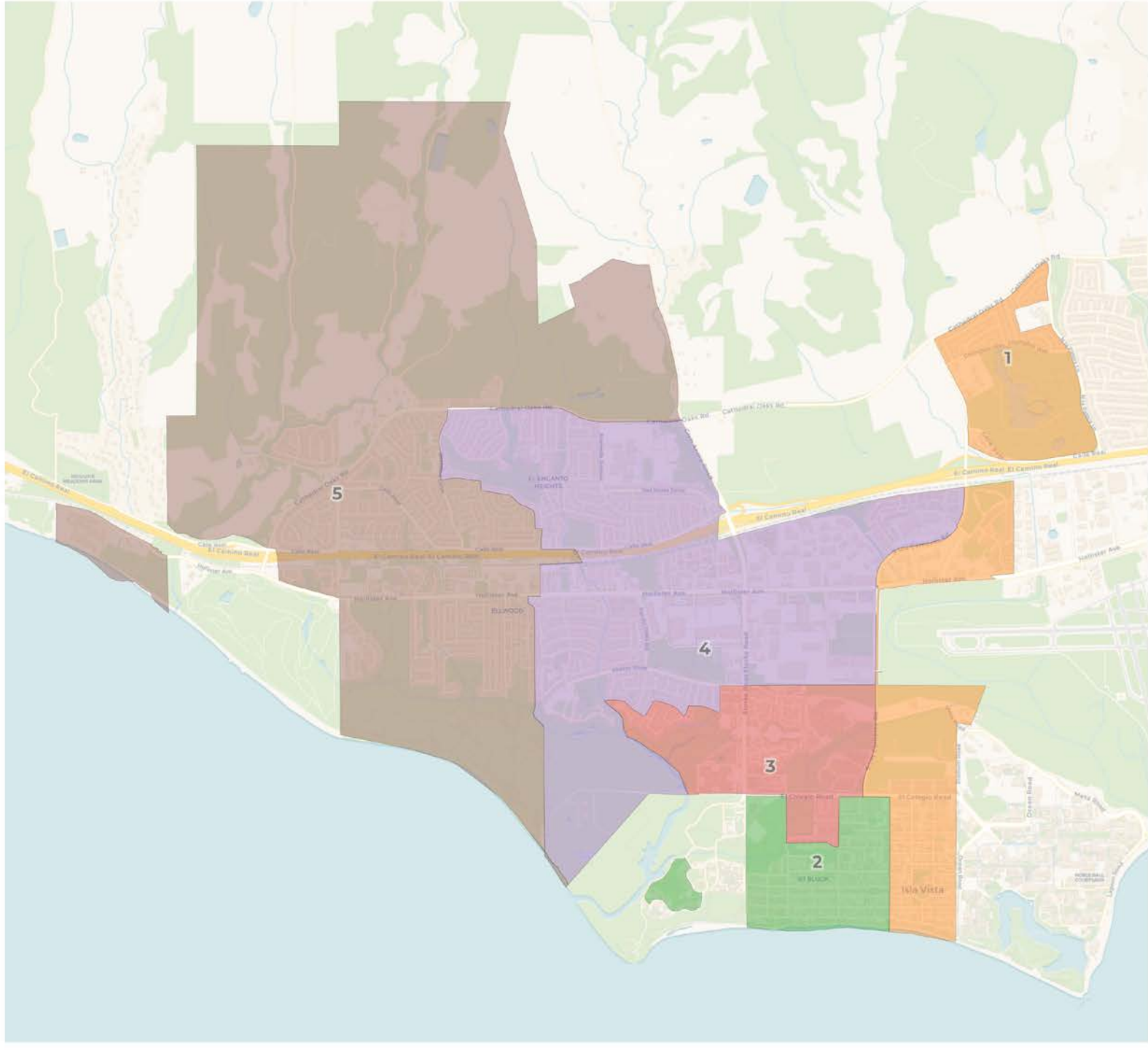
- Contiguous – districts should not hop/jump
- Maintain “communities of interest”
- Easily identifiable and understandable lines, following city, natural, and man-made boundaries
- Keep districts compact – appearance/function

2020 Census

	Districtwide
Population	41,575
Deviation	0
Deviation %	0.0%
Other	21,013
Other %	50.5%
Latino	12,769
Latino %	30.7%
Asian	7,088
Asian %	17.0%
Black	705
Black %	1.7%

Citizen Voting Age Population (CVAP)

	0
Total CVAP	30,592
Other CVAP	18,635
Other CVAP %	60.9%
Latino CVAP	7,408
Latino CVAP %	24.2%
Asian CVAP	3,280
Asian CVAP %	10.7%
Black CVAP	1,269
Black CVAP %	4.1%

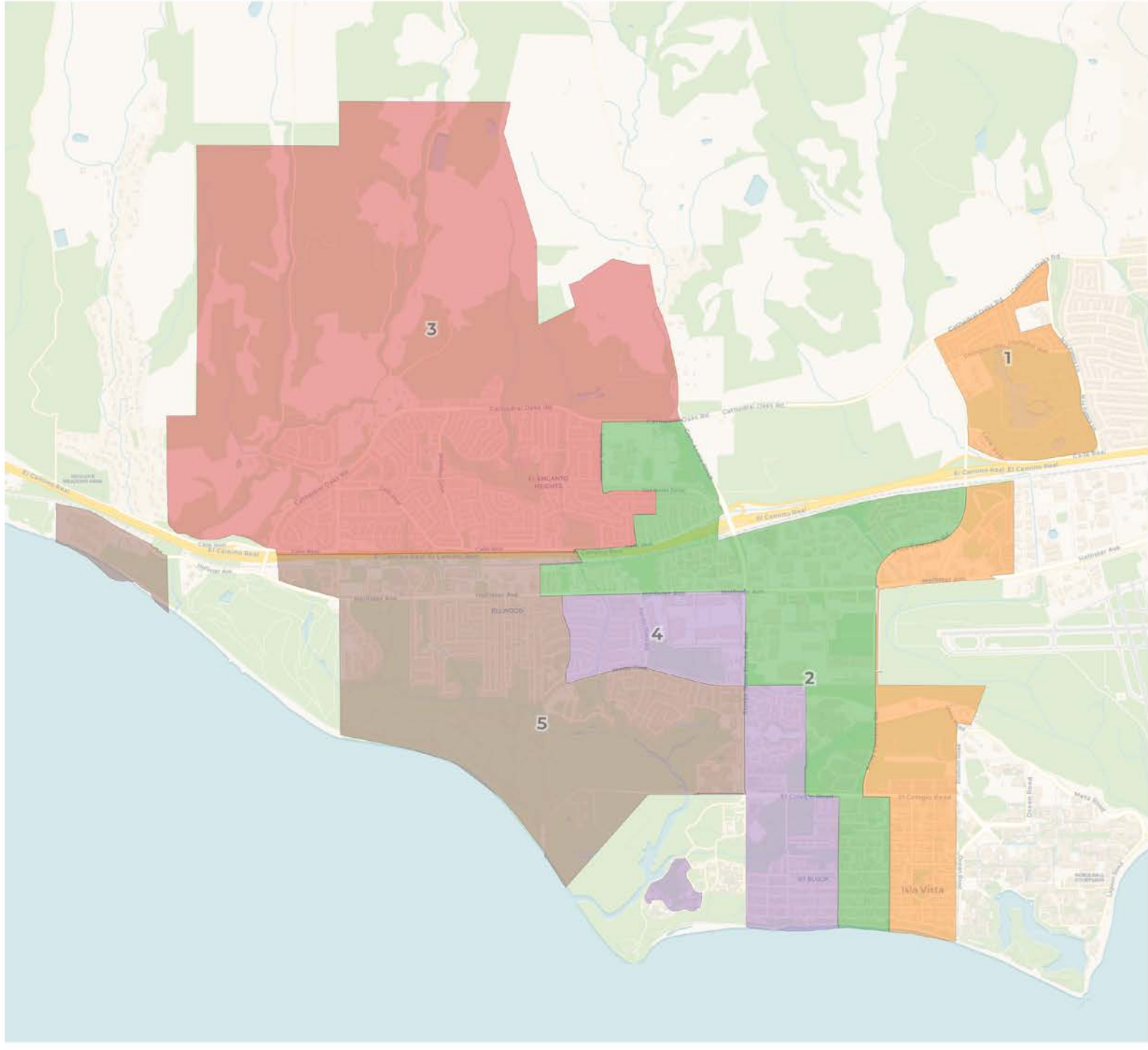


2020 Census

	1	2	3	4	5
Population	8,438	8,094	8,437	8,598	8,032
Deviation	118	-226	117	278	-288
Deviation %	1.4%	-2.7%	1.4%	3.3%	-3.5%
Other	4,092	4,170	4,190	4,407	4,174
Other %	48.5%	51.5%	49.7%	51.3%	52.0%
Latino	1,732	2,424	2,723	2,781	3,112
Latino %	20.5%	29.9%	32.3%	32.3%	38.7%
Asian	2,446	1,324	1,397	1,297	624
Asian %	29.0%	16.4%	16.6%	15.1%	7.8%
Black	168	176	127	113	122
Black %	2.0%	2.2%	1.5%	1.3%	1.5%

Citizen Voting Age Population (CVAP)

	1	2	3	4	5
Total CVAP	7,987	6,837	4,847	4,915	6,029
Other CVAP	4,447	4,619	2,791	3,244	3,555
Other CVAP %	55.7%	67.6%	57.6%	66.0%	59.0%
Latino CVAP	1,750	1,418	1,115	1,143	1,982
Latino CVAP %	21.9%	20.7%	23.0%	23.3%	32.9%
Asian CVAP	1,405	368	864	340	304
Asian CVAP %	17.6%	5.4%	17.8%	6.9%	5.0%
Black CVAP	385	432	77	188	188
Black CVAP %	4.8%	6.3%	1.6%	3.8%	3.1%



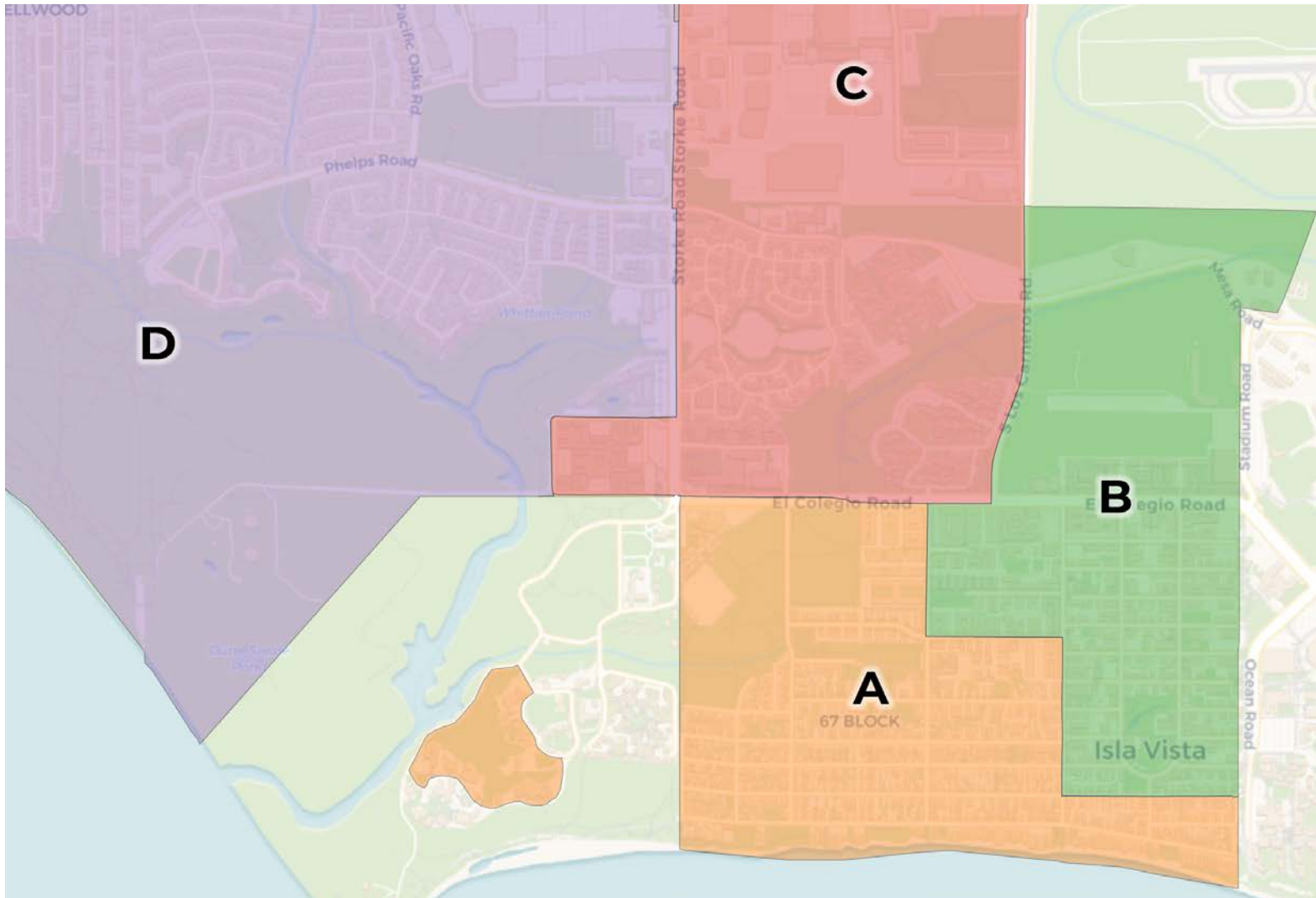
2020 Census

	1	2	3	4	5
Population	8,438	9,602	6,899	8,740	7,920
Deviation	118	1,282	-1,421	420	-400
Deviation %	1.4%	15.4%	-17.1%	5.0%	-4.8%
Other	4,092	4,345	3,823	4,801	3,972
Other %	48.5%	45.3%	55.4%	54.9%	50.2%
Latino	1,732	3,100	2,517	2,656	2,767
Latino %	20.5%	32.3%	36.5%	30.4%	34.9%
Asian	2,446	1,970	488	1,169	1,015
Asian %	29.0%	20.5%	7.1%	13.4%	12.8%
Black	168	187	71	114	166
Black %	2.0%	1.9%	1.0%	1.3%	2.1%

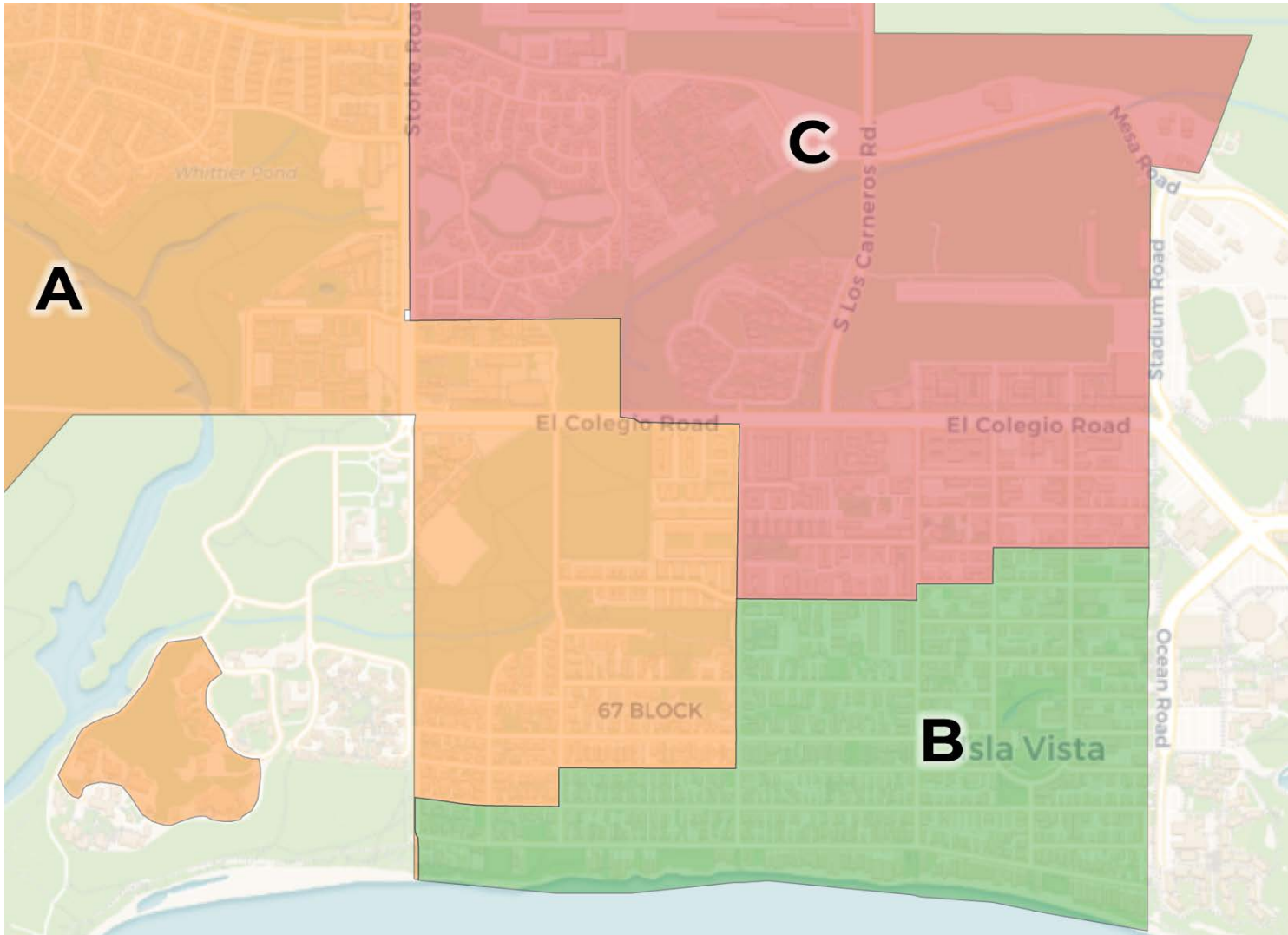
Citizen Voting Age Population (CVAP)

	1	2	3	4	5
Total CVAP	7,987	7,085	4,719	5,513	5,311
Other CVAP	4,447	4,270	2,728	3,735	3,476
Other CVAP %	55.7%	60.3%	57.8%	67.7%	65.4%
Latino CVAP	1,750	1,655	1,591	1,045	1,367
Latino CVAP %	21.9%	23.4%	33.7%	19.0%	25.7%
Asian CVAP	1,405	694	286	645	251
Asian CVAP %	17.6%	9.8%	6.1%	11.7%	4.7%
Black CVAP	385	466	114	88	217
Black CVAP %	4.8%	6.6%	2.4%	1.6%	4.1%

Visualization A



Visualization B

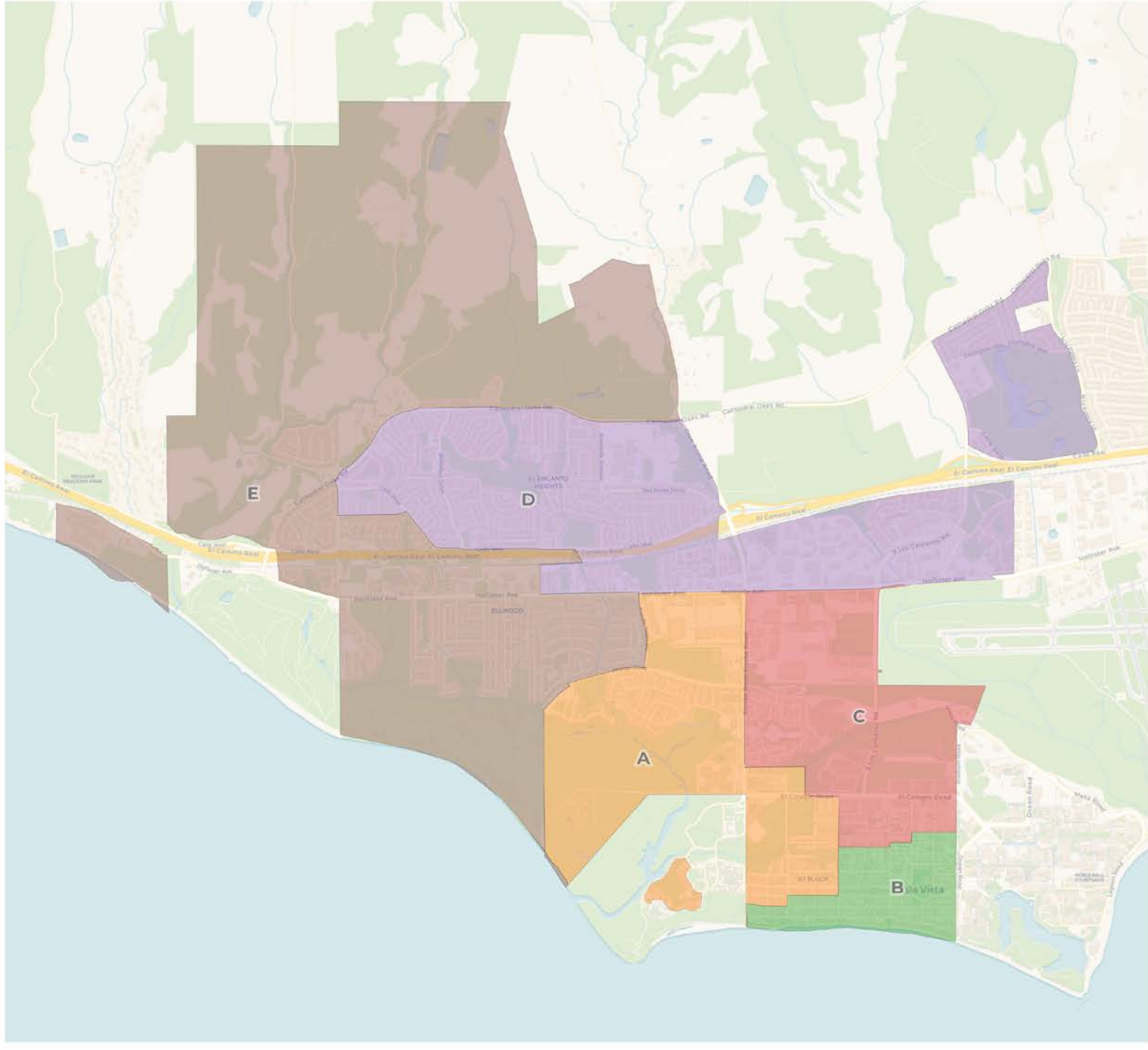




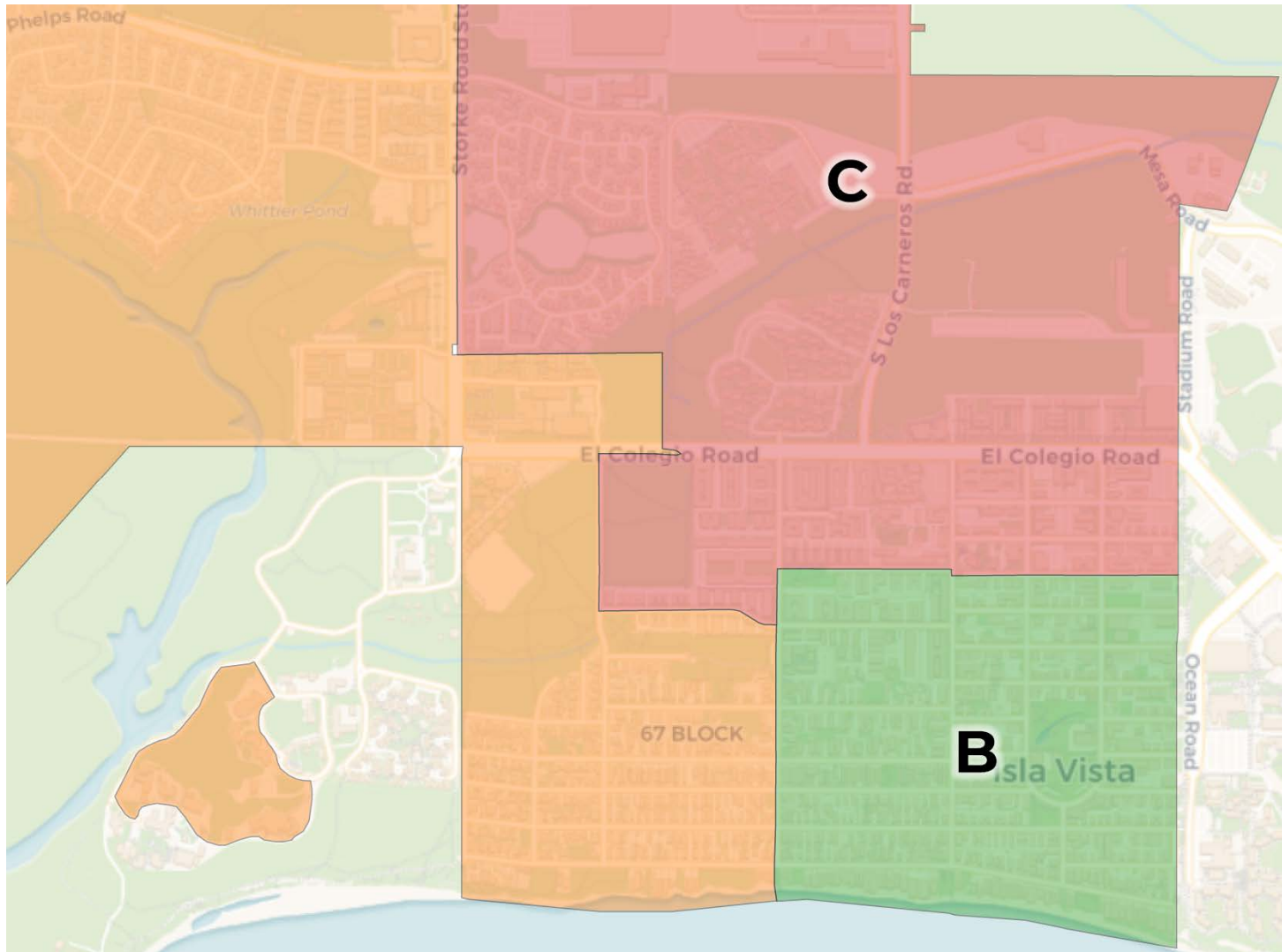
**REDISTRICTING
PARTNERS**

Goleta West Sanitary District

Visualization B



Visualization C



Goleta West Sanitary District

Districing Timeline

June 6, 2023

Public Hearing #1: Districing 101

August 1, 2023

Public Hearing #2: Community Outreach

September 5, 2023

Public Hearing #3: Draft Maps

September 19, 2023

Public Hearing #4: Revised Draft Maps

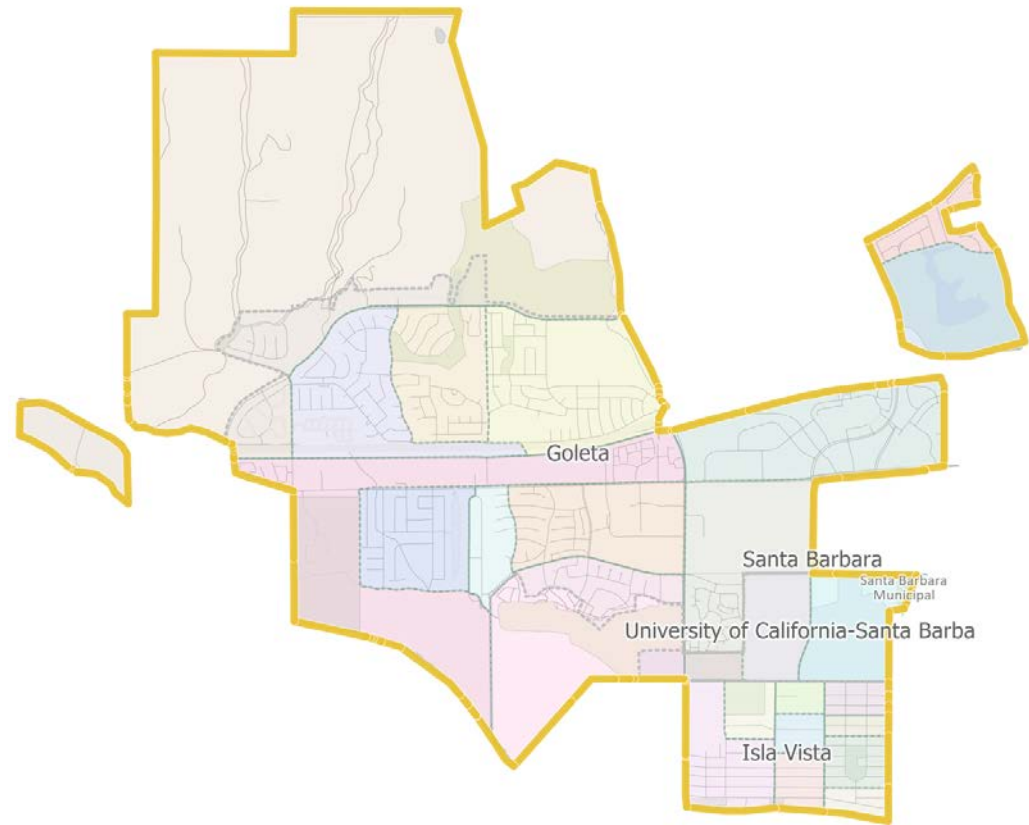
October 3, 2023

Public Hearing #5: Final Vote

Next Steps

Drafting Boundary Lines

- Discuss possible draft map options
 - Live Draw or give direction
- Draft maps will be presented at the next Board meeting for discussion
 - This is an iterative process – you will have the ability to make changes to the draft maps





REDISTRICTING PARTNERS