

# Goleta West Sanitary District 2023 Districting Community Outreach



# Agenda

Things we will cover:

- What is Districting
- Traditional Districting/Redistricting Principles
- How the public can participate in the process
- Census Data
- Public Hearing Schedule
- Next Steps

# What is Districting

## Definition

Districting is the initial process of creating election district boundaries.

These boundaries determine:

- Eligibility to run for office – must live within boundaries to qualify for election.
- Who votes in the election – only voters within the district vote for their District board member.

# Required Redistricting Criteria

There are a number of criteria that are required under the FAIR MAPS Act (ranked):

- Relatively equal size - people, not citizens
- Contiguous – districts should not hop/jump
- Maintain “*communities of interest*”
- Easily identifiable and understandable lines,  
following city, natural, and man-made boundaries
- Keep districts compact – appearance/function

# Required Redistricting Criteria

There are a number of criteria that are required under the FAIR MAPS Act (ranked):

- Relatively equal size - people, not citizens
- **Contiguous – districts should not hop/jump**
- Maintain “*communities of interest*”
- Easily identifiable and understandable lines,  
following city, natural, and man-made boundaries
- Keep districts compact – appearance/function

# Contiguity

Two definitions for what is contiguous

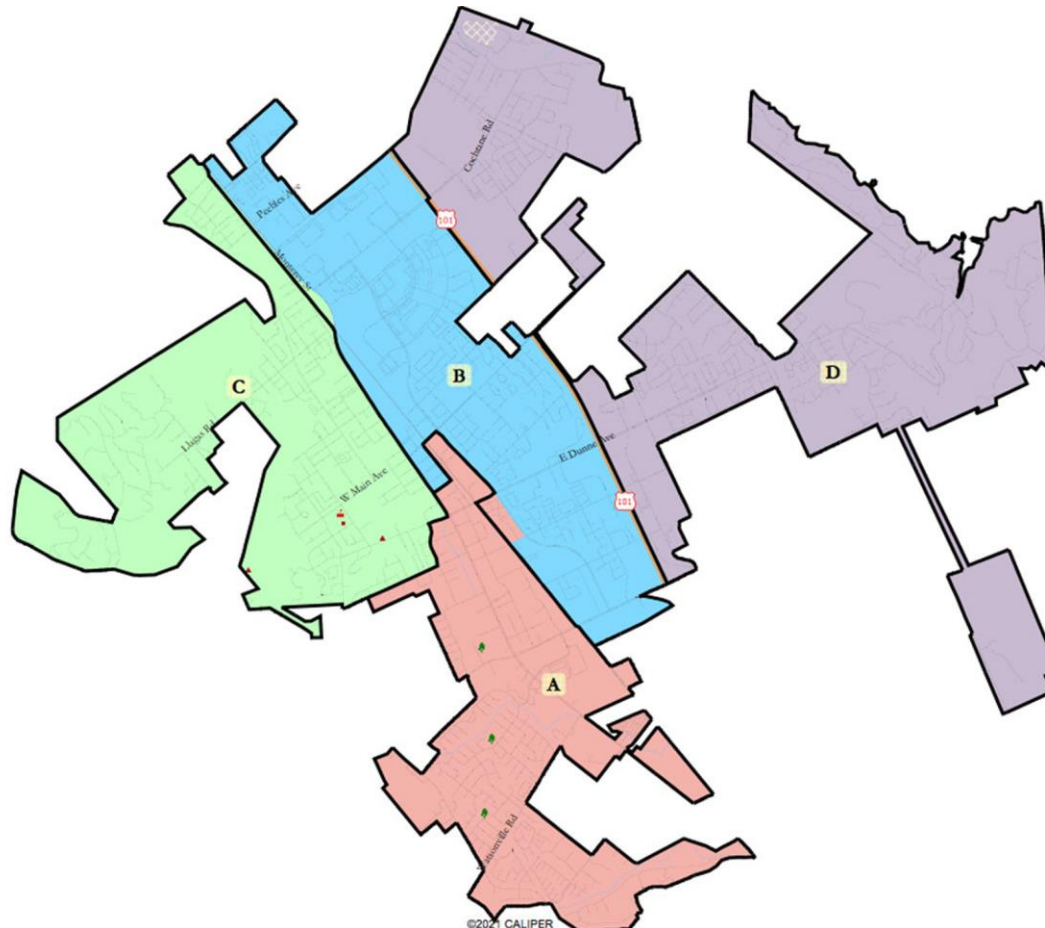
Contiguity should be thought of as “literal” and “functional.”

- An area that is one whole piece is “literally contiguous.”
- An area that represents how the population functions or how people are connected is “functionally contiguous.”



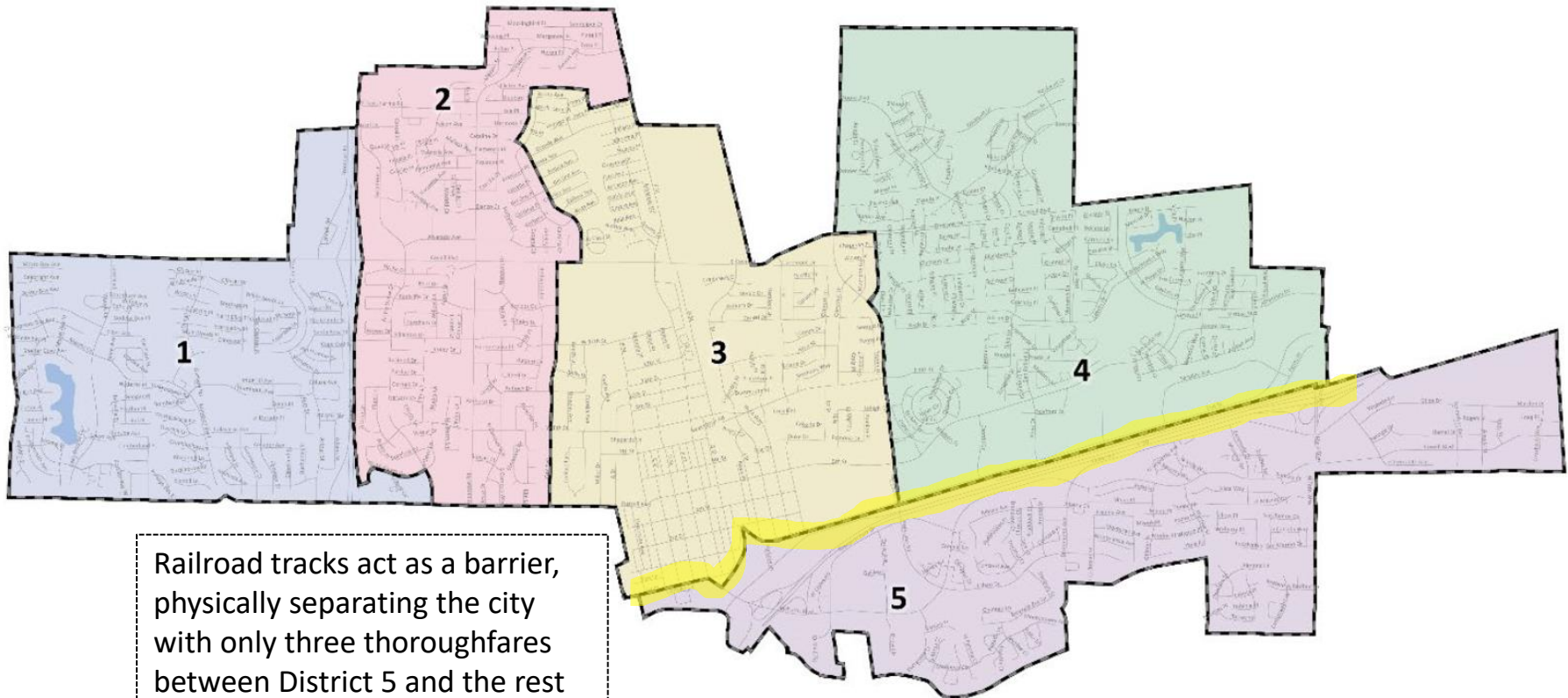
# Contiguity

Determining what is “contiguous”



# Contiguity

Determining what is “contiguity”



Railroad tracks act as a barrier, physically separating the city with only three thoroughfares between District 5 and the rest of the city.



# Required Redistricting Criteria

There are a number of criteria that are required under the FAIR MAPS Act (ranked):

- Relatively equal size - people, not citizens
- Contiguous – districts should not hop/jump
- Maintain “*communities of interest*”
- Easily identifiable and understandable lines,  
following city, natural, and man-made boundaries
- **Keep districts compact – appearance/function**

# Compactness

## Determining what is “compact”

The measure of compactness can get complicated.

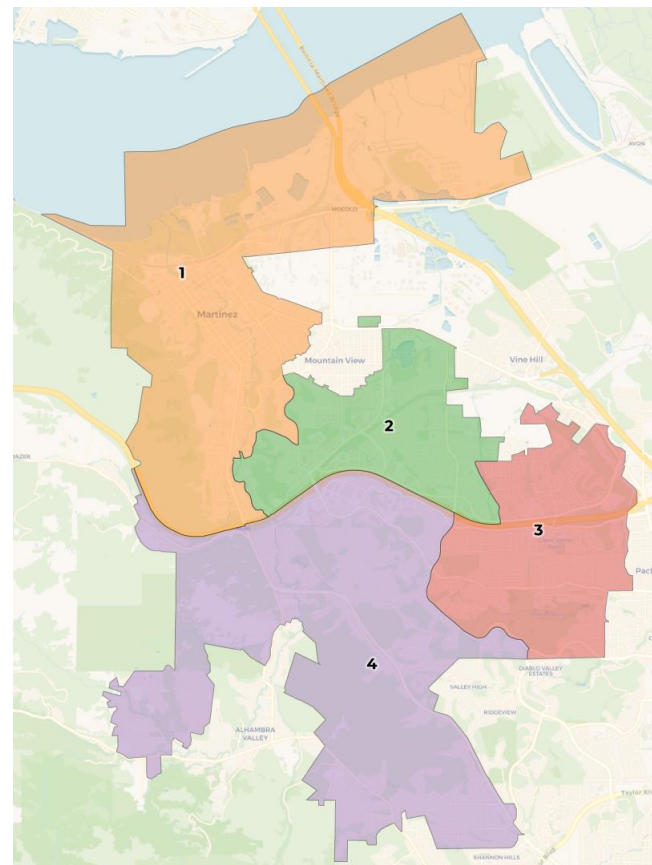
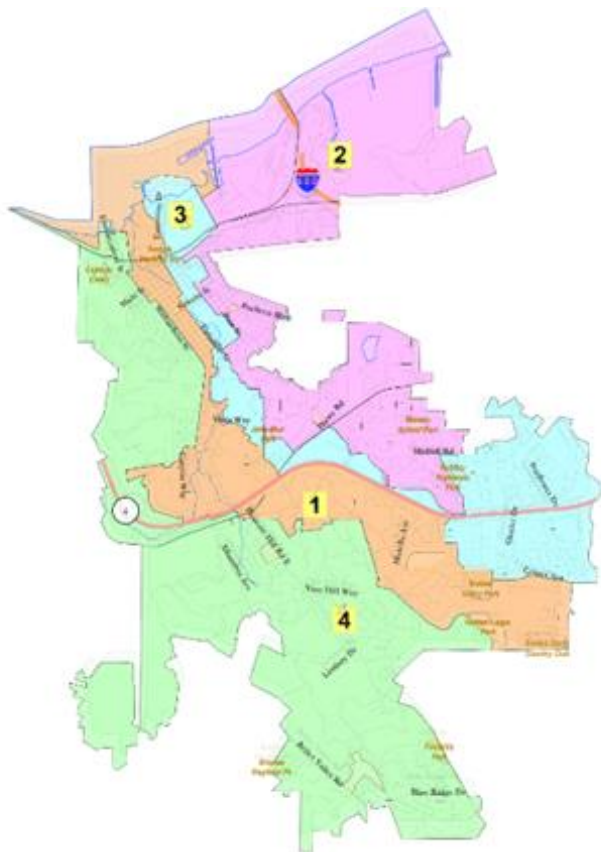
- Ratio of the circumference of a district and the area of a district.
- Measuring the number of distinct straight lines and the number of kinks and bends.
- Simply outlawing funny shapes.

NOT  
COMPACT



# Compactness

Determining what is “compact”



# Required Redistricting Criteria

There are a number of criteria that are required under the FAIR MAPS Act (ranked):

- Relatively equal size - people, not citizens
- Contiguous – districts should not hop/jump
- **Maintain “*communities of interest*”**
- Easily identifiable and understandable lines, following city, natural, and man-made boundaries
- Keep districts compact – appearance/function

# Communities of Interest

Bringing like people together for representation

What are you looking for in trying to judge the applicability of a Community of Interest to the districting process?

- Group with shared culture / characteristics
- Geographic Nature / Density / Ability to be mapped
- Relationship to Agency / Policies

# Communities of Interest

Bringing like people together for representation

Communities of interest are the building blocks of districts.

A community of interest includes ethnic and language minorities and other groups.

- Subjective
- Open-ended to be as inclusive as possible

Communities covered by the Voting Rights Act

- Latinos
- Asians
- African Americans

# Communities of Interest

Bringing like people together for representation

Communities of interest are the building blocks of districts.

A community of interest includes ethnic and language minorities and other groups.

- Subjective
- Open-ended to be as inclusive as possible

Communities covered by the Voting Rights Act

- Latinos
- Asians
- African Americans

**While communities of interest may include race, it cannot be the *predominant factor* in drawing district boundaries.**

# Communities of Interest

Bringing like people together for representation

- Historical communities
- Economic interests
- Racial composition
- Ethnic Areas
- Cultural amenities
- Religious facilities
- Immigrant communities
- Languages spoken
- Geographic features
- Neighborhoods
- Economic opportunity zones
- Tourism Areas
- School districts
- Outdoor recreation areas
- Communities defined by natural resource features
- Downtown / Urban
- Rural or Agricultural
- Homeowner or Renters
- Creative arts communities
- Media markets
- *Many, many more*



# What is NOT a Community of Interest

## Preventing a Districting from Becoming a Gerrymander

The Fair Maps Act explicitly prohibits these groups from being considered as communities of interest

- Political party affiliation
- Incumbents
- Political candidates

It also is hard, in redistricting to truly consider:

- *Groups of similarly minded people who do not share a similar geographic location.*
- *Communities of Interest that are districtwide.*

# Communities of Interest

## Three Critical Questions in Defining YOUR Community

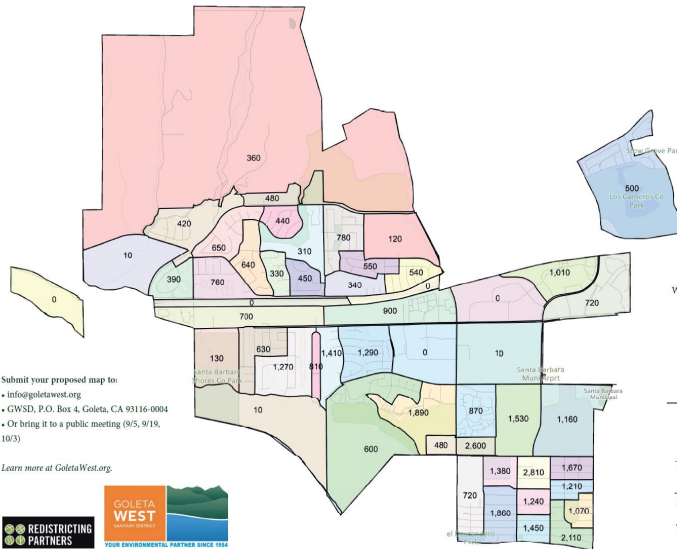
- Does the community have a shared culture, characteristics or bond?
- Is the community geographic in nature? Is the community able to be mapped?
- How would you describe the community's relationship with the jurisdiction, and how is your community affected by the policy decisions made by the elected officials?

# How to get involved

## Submitting Your Testimony

- Speaking directly to the Board of Directors in a public hearing
- Emailing the District
  - [info@goletawest.org](mailto:info@goletawest.org)
- Drawing maps



### GOLETA WEST SANITARY DISTRICT DISTRICT MAPPING TOOL



Submit your proposed map to:

- [info@goletawest.org](mailto:info@goletawest.org)
- GWSD, P.O. Box 4, Goleta, CA 93116-0004
- Or bring it to a public meeting (9/5, 9/19, 10/3)

Learn more at [GoletaWest.org](http://GoletaWest.org).

#### THE RULES

- The numbers in each colored area represent the number of individual residents according to the 2020 Census.
- To create districts, we need five areas with a similar number of people in each. The target is roughly 8,300 people per district.
- The difference between the district with the highest population and the district with the lowest population should be no greater than 830 people.

#### ABOUT THE BLOCKS

Each of these blocks is drawn within the district's census blocks and block groups, following major roads. The numbers are a rounded calculation based on the final census data adjusted by the State of California.

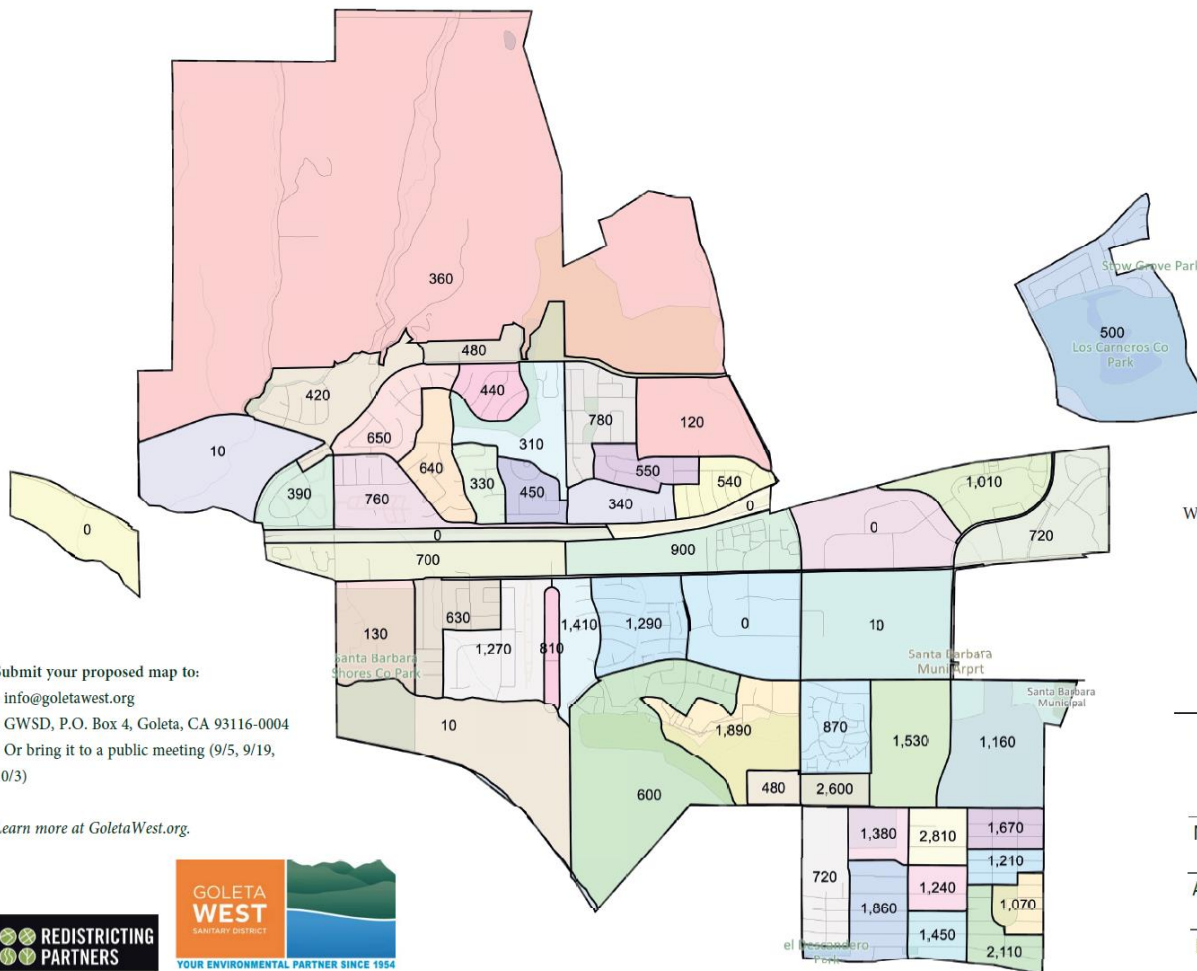
Write in the population estimates for each of your drawn districts.  
~8,300 Target Population Per District

DISTRICT 1	DISTRICT 2	
DISTRICT 3	DISTRICT 4	DISTRICT 5

NAME \_\_\_\_\_

ADDRESS \_\_\_\_\_

EMAIL \_\_\_\_\_ PHONE \_\_\_\_\_



## THE RULES

- The numbers in each colored area represent the number of individual residents according to the 2020 Census.
- To create districts, we need five areas with a similar number of people in each. The target is roughly 8,300 people per district.
- The difference between the district with the highest population and the district with the lowest population should be no greater than 830 people.

## ABOUT THE BLOCKS

Each of these blocks is drawn within the district's census blocks and block groups, following major roads. The numbers are a rounded calculation based on the final census data adjusted by the State of California.

Write in the population estimates for each of your drawn districts.

~8,300 Target Population Per District

DISTRICT 1

## DISTRICT 2

DISTRICT 3

DISTRICT 4

## DISTRICT 5

NAME \_\_\_\_\_

ADDRESS

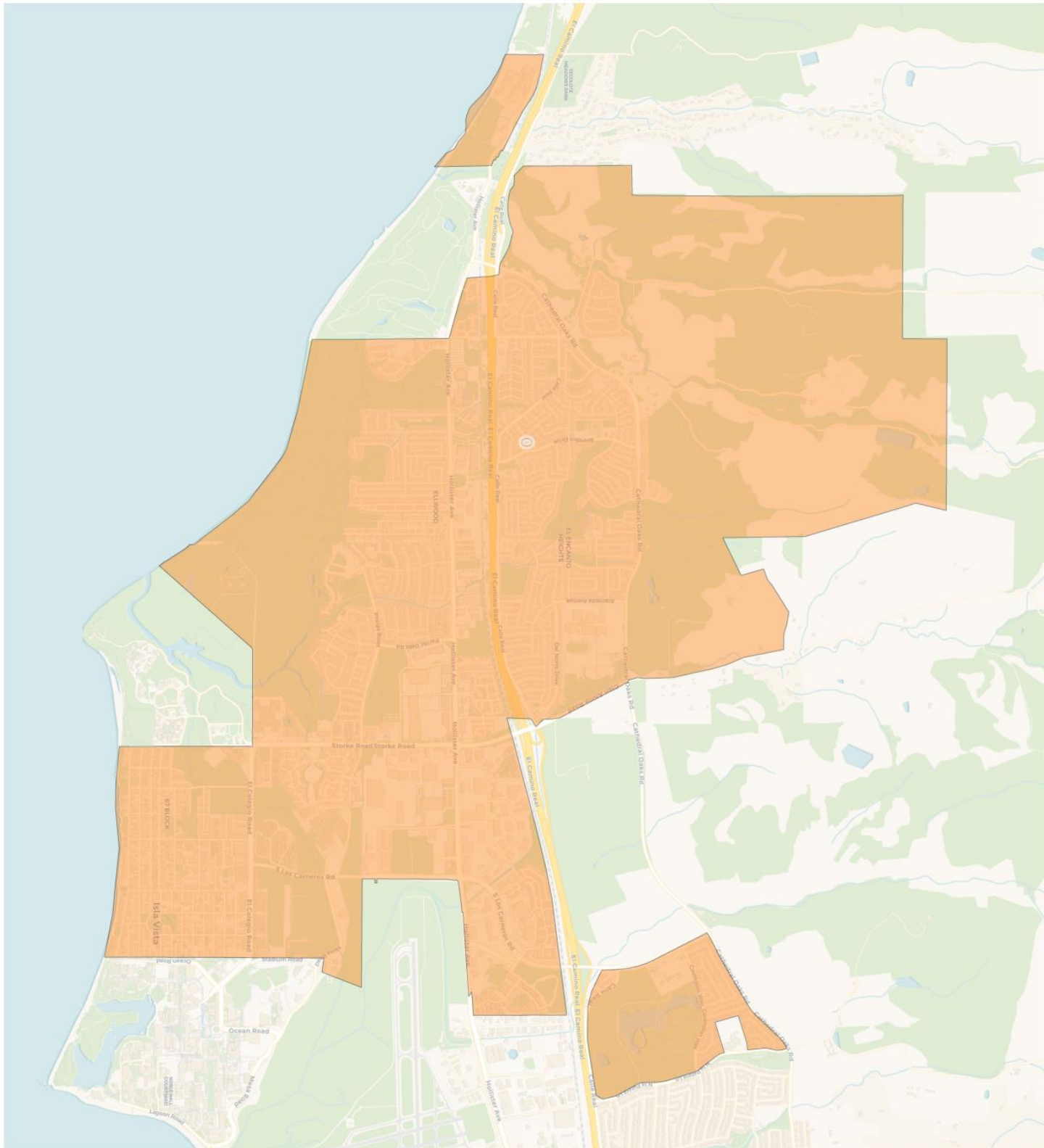
EMAIL

PHONE

Submit your proposed map to:

- info@goletawest.org
- GWSD, P.O. Box 4, Goleta, CA 93116-0004
- Or bring it to a public meeting (9/5, 9/19, 10/3)

Learn more at [GoletaWest.org](http://GoletaWest.org).



## 2020 Census

	Districtwide
Population	41,575
Deviation	0
Deviation %	0.0%
Other	21,013
Other %	50.5%
Latino	12,769
Latino %	30.7%
Asian	7,088
Asian %	17.0%
Black	705
Black %	1.7%

## Citizen Voting Age Population (CVAP)

	0
Total CVAP	30,592
Other CVAP	18,635
Other CVAP %	60.9%
Latino CVAP	7,408
Latino CVAP %	24.2%
Asian CVAP	3,280
Asian CVAP %	10.7%
Black CVAP	1,269
Black CVAP %	4.1%

# Goleta West Sanitary District

## Districting Timeline

June 6, 2023

Public Hearing #1: Districting 101

**August 1, 2023**

**Public Hearing #2: Community Outreach**

September 5, 2023

Public Hearing #3: Introduce Draft Maps

September 19, 2023

Public Hearing #4: Revised Draft Maps

October 3, 2023

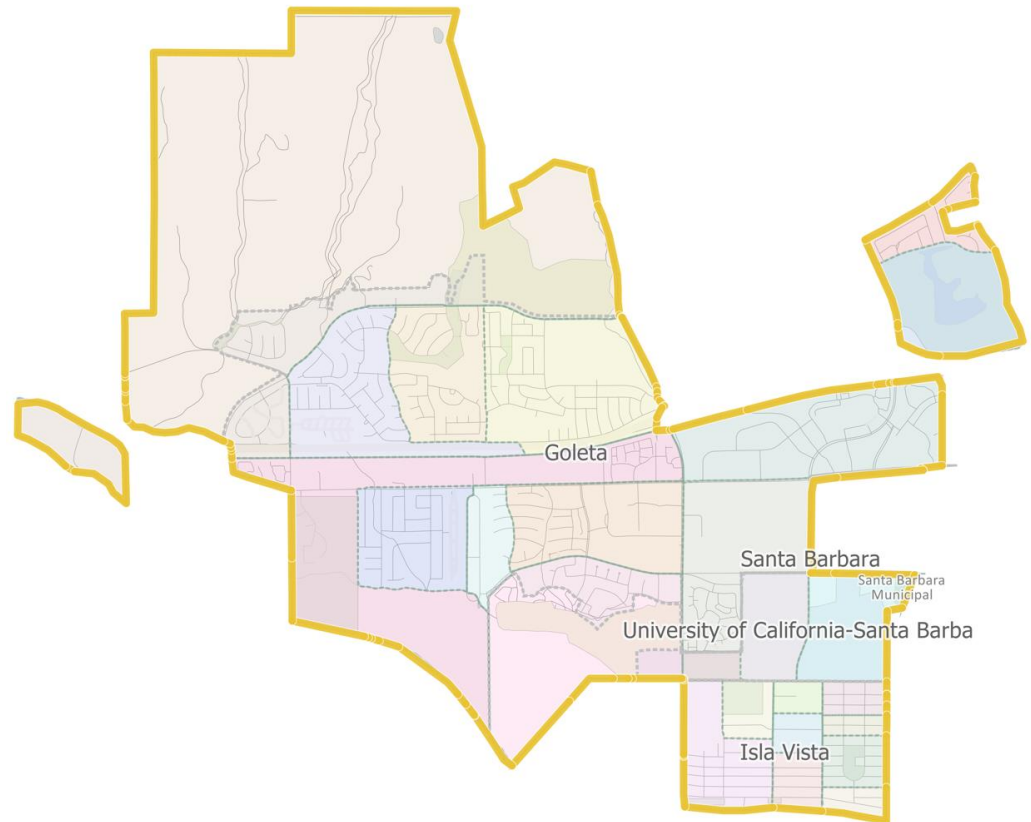
Public Hearing #5: Final Vote



# Next Steps

## Moving from COI to Maps

- Discuss possible draft map options
  - 3 draft plans
- Draft maps will be presented at the next Board meeting for discussion
  - This is an iterative process – you will have the ability to make changes to the draft maps







**REDISTRICTING  
PARTNERS**