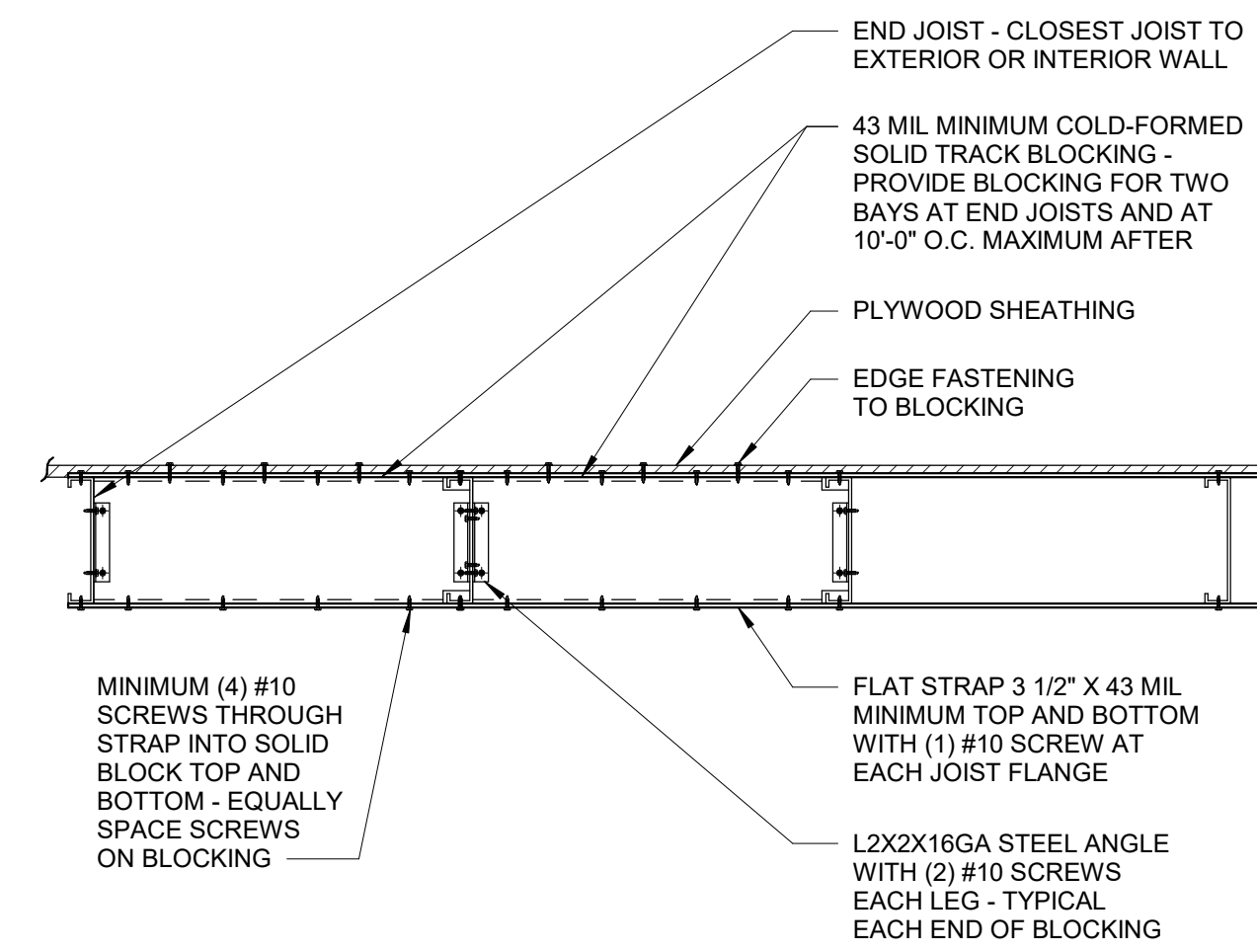
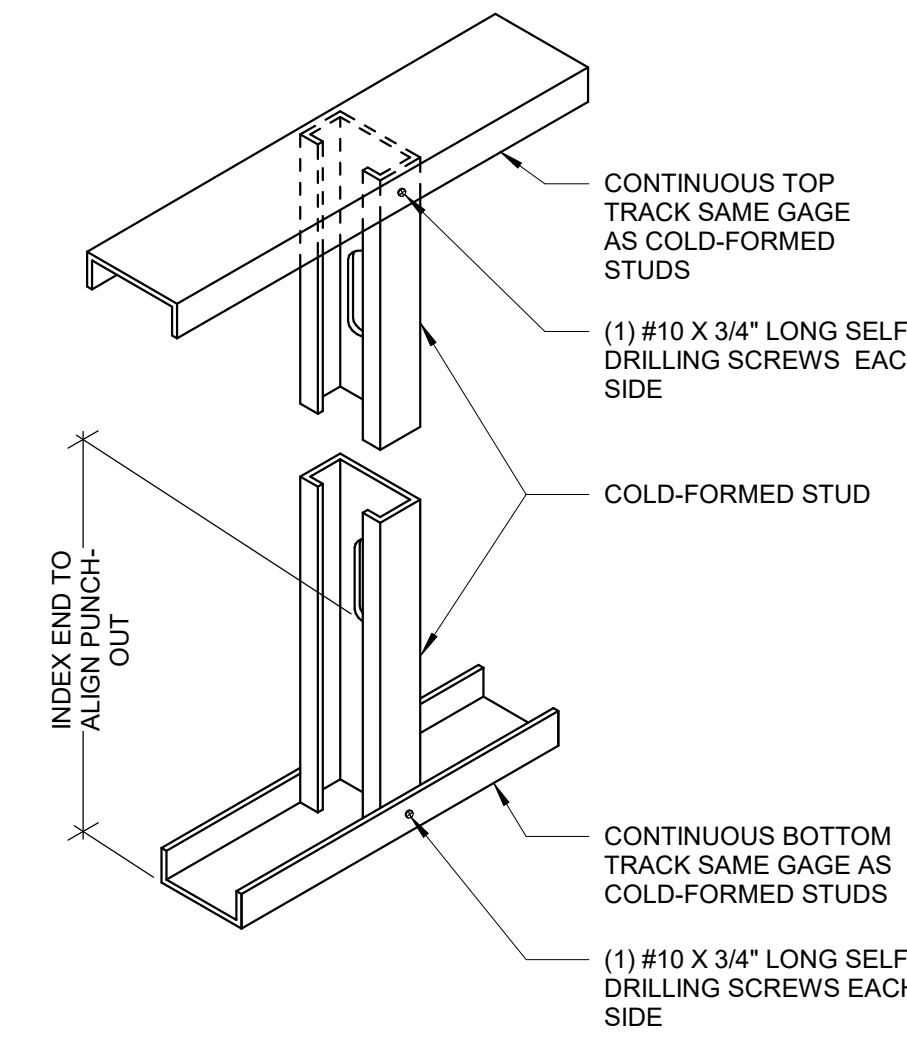


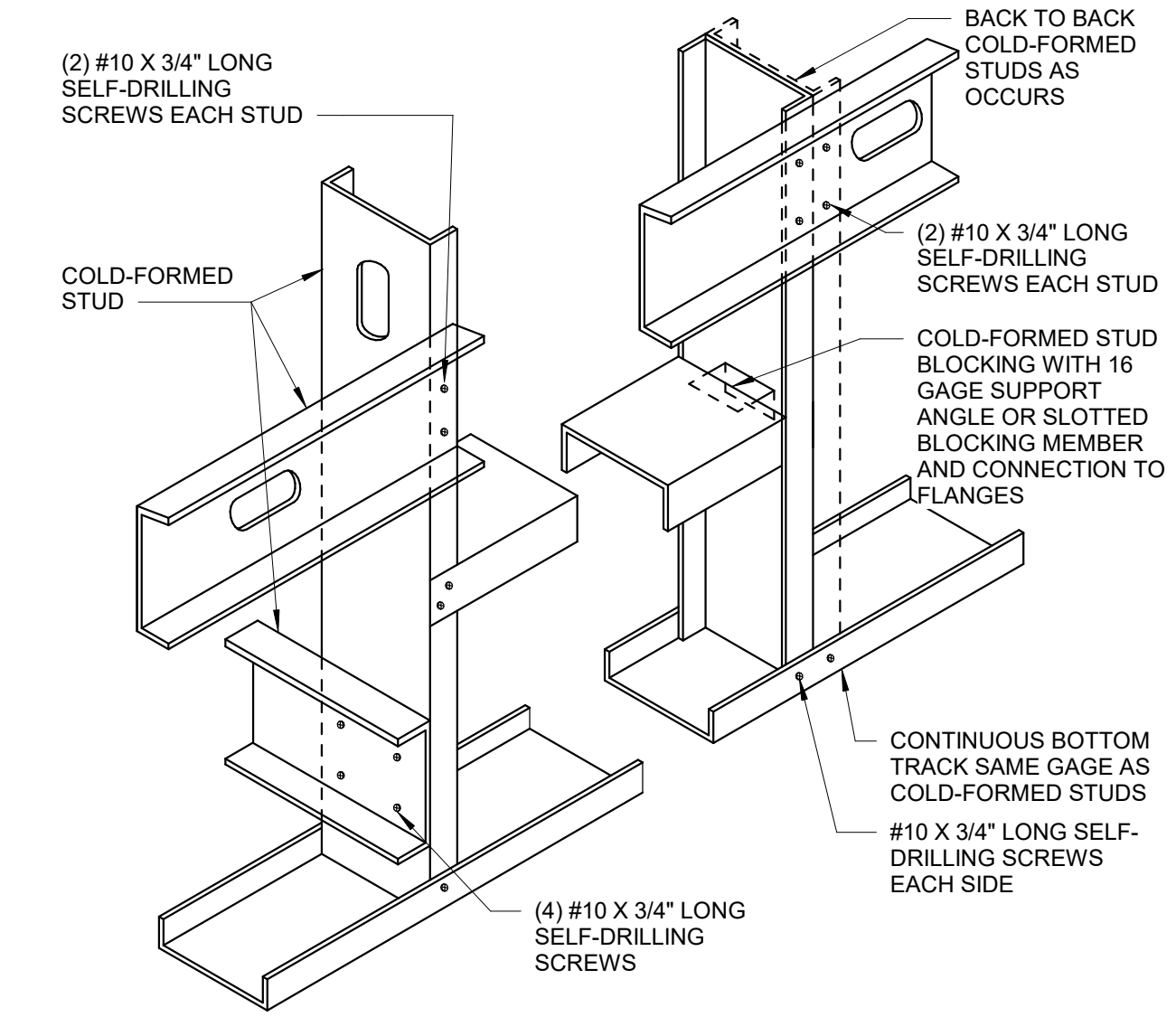
85 TYPICAL DETAIL - COLD-FORMED JOIST BRIDGING
S-010 NOT TO SCALE
17-036



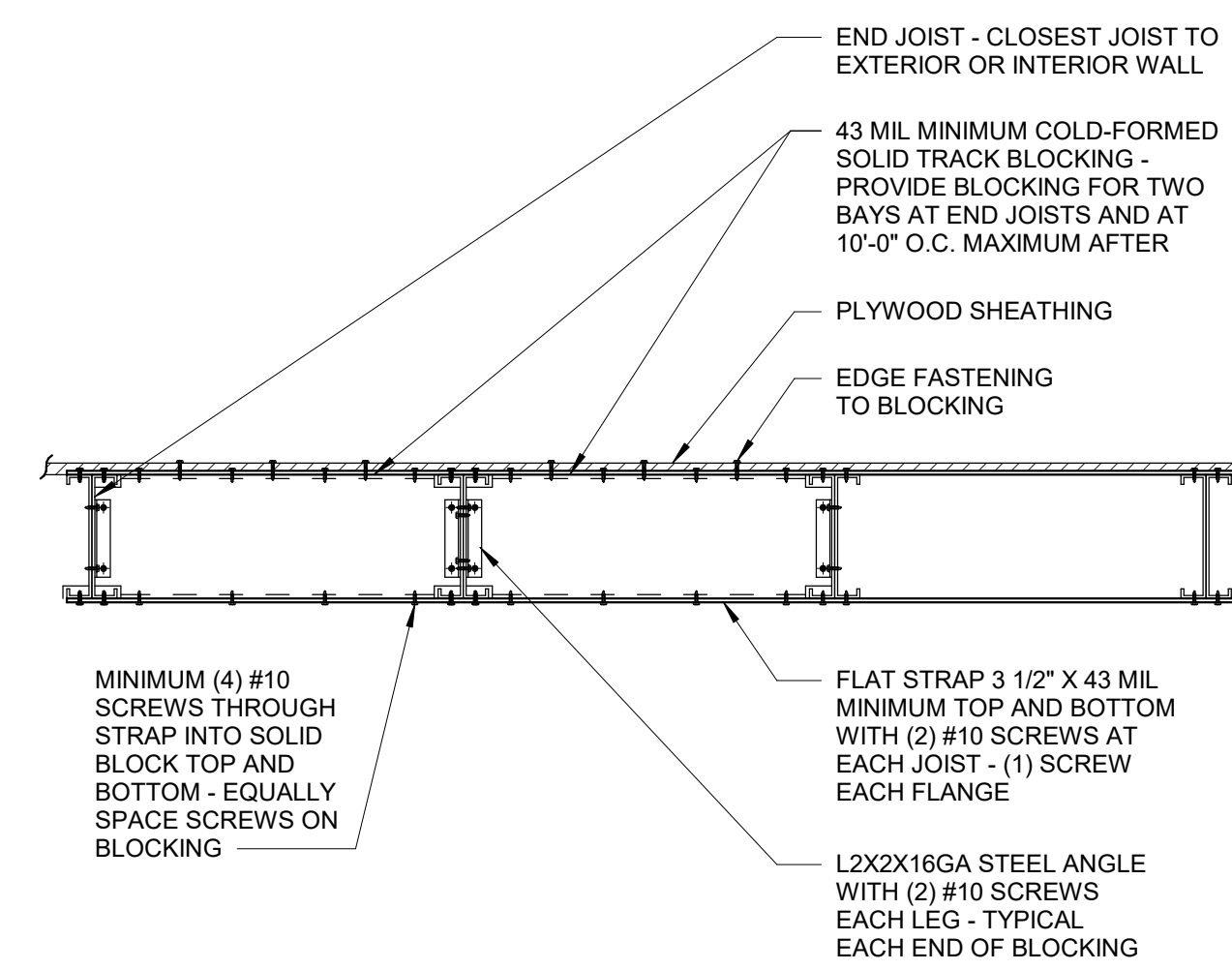
82 TYPICAL DETAIL - COLD-FORMED JOIST BRIDGING
S-010 NOT TO SCALE
17-036



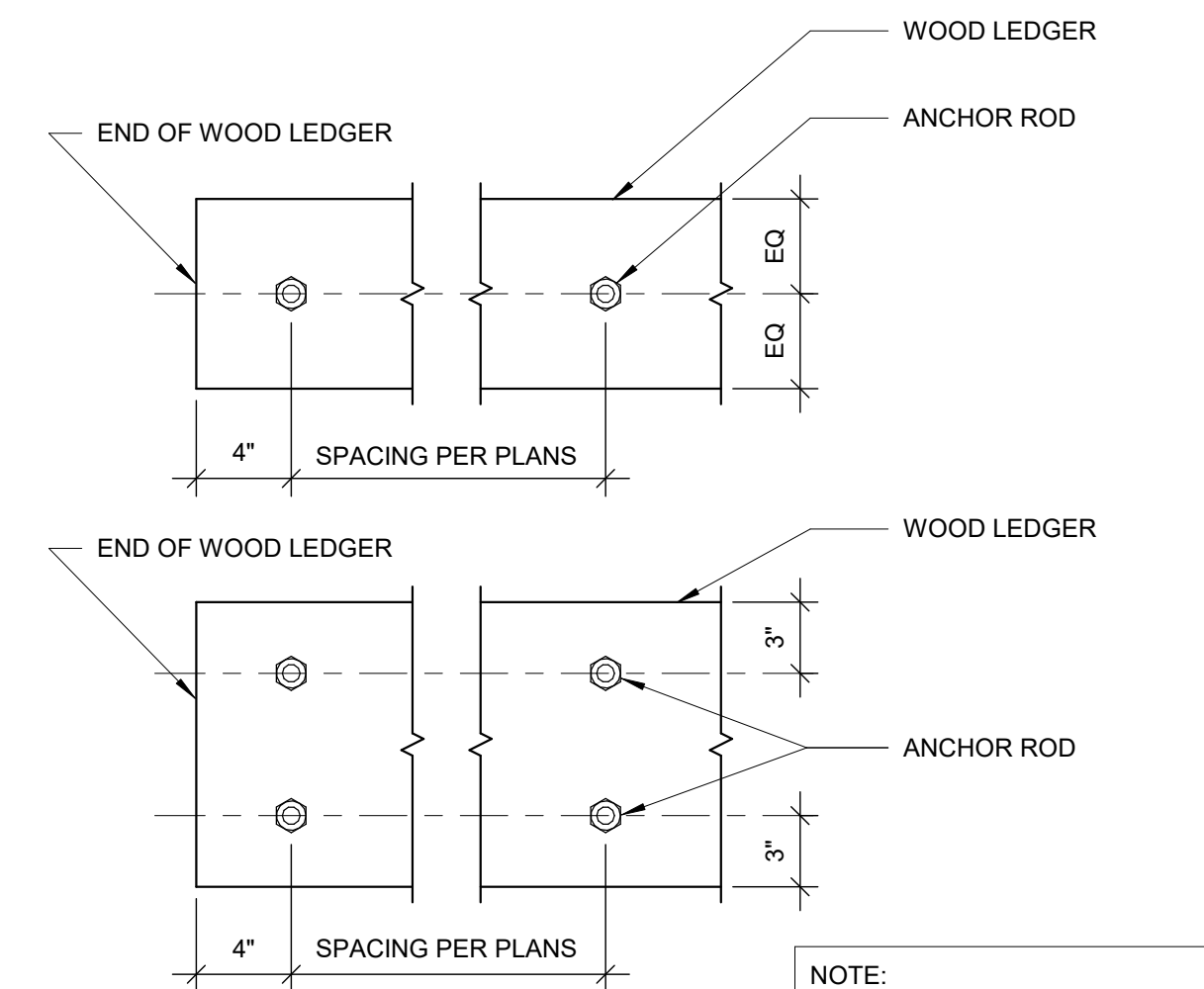
79 TYPICAL DETAIL - COLD-FORMED STUD TO TRACK CONNECTION
S-010 NOT TO SCALE
17-036



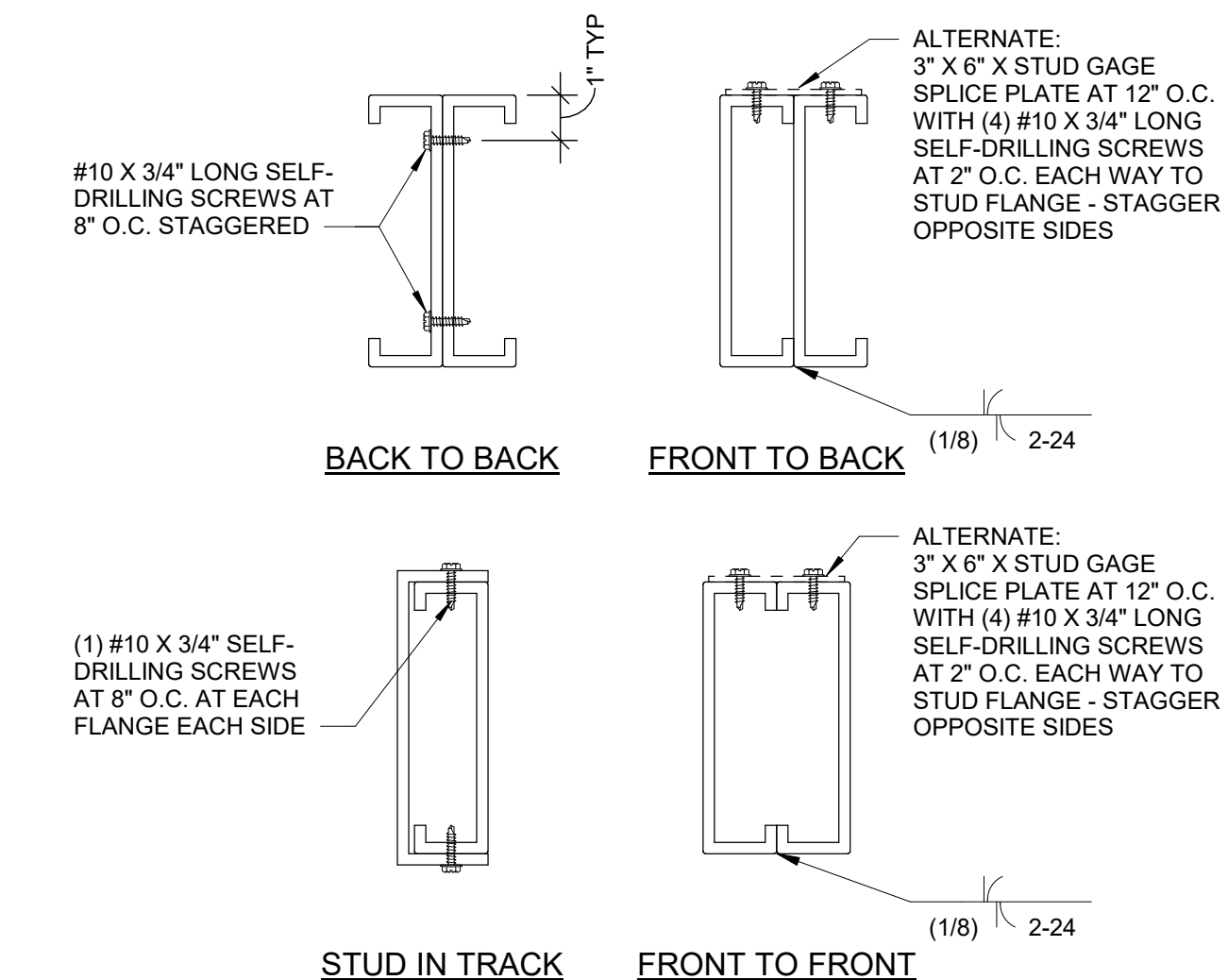
76 TYPICAL DETAIL - TRACK AND BLOCKING TO COLD-FORMED STUD ATTACHMENT
S-010 NOT TO SCALE
17-036



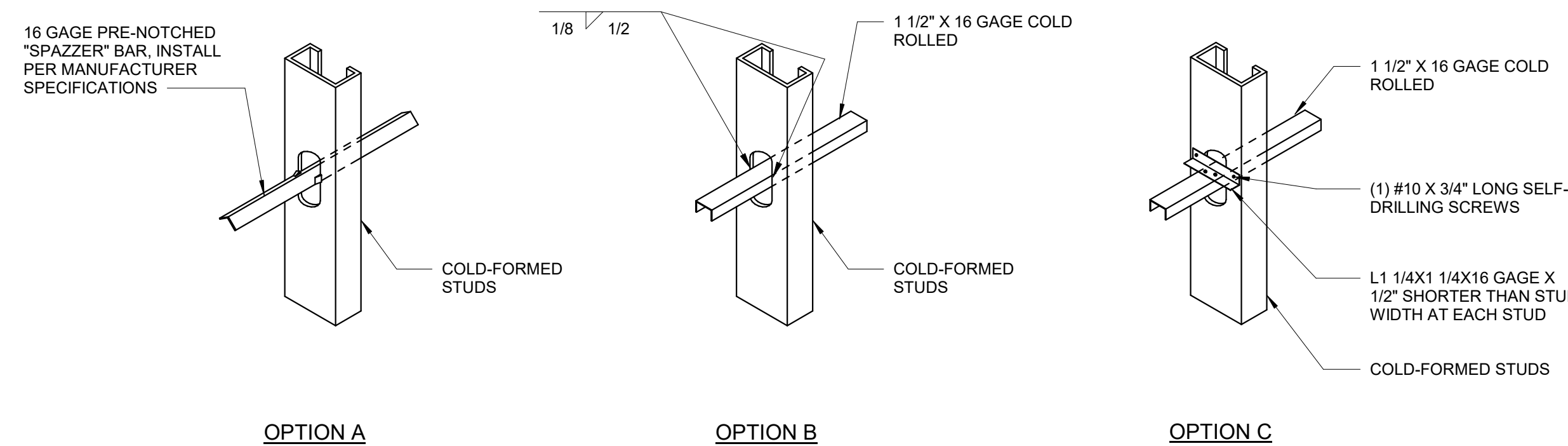
83 TYPICAL DETAIL - COLD-FORMED JOIST BRIDGING
S-010 NOT TO SCALE
17-036



80 TYPICAL DETAIL - ANCHOR ROD LOCATIONS AT WOOD LEDGER
S-010 NOT TO SCALE
17-036



77 TYPICAL DETAIL - STUD TO STUD CONNECTIONS
S-010 NOT TO SCALE
17-036



87 TYPICAL DETAIL - SPLICE IN TOP TRACK
S-010 NOT TO SCALE
17-036

NOTES:
1. ALTERNATE BRIDGING INCLUDING BUT NOT LIMITED TO CLARK DEITRICH OR THE STEEL NETWORKS SYSTEMS ARE ACCEPTABLE
2. REFERENCE GENERAL STRUCTURAL NOTES FOR SPACING OF BRIDGING