

**CONSTRUCTION NOTES**

- 1 SAWCUT AND REMOVE EXISTING ASPHALT AND BASE.
- 2 CONSTRUCT ASPHALT CONCRETE PAVEMENT ("CONFORM") AFTER NEW CONSTRUCTION PER DETAIL A, SHEET C4.
- 3 PROVIDE 12-IN SQUARE MIDSTATE CONCRETE PRECAST CATCH BASIN (TRAFFIC RATED).
- 4 PROVIDE 6-IN PVC STORM DRAIN PER TYPICAL TRENCH DETAIL PER DETAIL B, SHEET C4. MINIMUM PIPE SLOPE 0.5%.
- 5 CONNECT EXISTING 6-IN PVC STORM DRAIN TO NEW CATCH BASIN.
- 6 SEE PLUMBING PLANS FOR CONNECTION OF ROOF DRAIN TO STORM DRAIN.
- 7 BUILDING IMPROVEMENTS PER ARCHITECT'S PLANS.
- 8 POTHOLE UTILITY CROSSING.
- 9 CONSTRUCT PERVIOUS CONCRETE PAVEMENT PER DETAIL C, SHEET C4.
- 10 PROVIDE PRECAST CONCRETE WHEEL STOP PER DETAIL G, SHEET C4.
- 11 CONSTRUCT 0" CURB PER DETAIL E, SHEET C4.
- 12 CONSTRUCT 6" CURB PER DETAIL H, SHEET C4.
- 13 CONSTRUCT CONCRETE PATHWAY PER DETAIL D, SHEET C4.
- 14 PROVIDE 4-IN SDR35 PVC PERFORATED STORM DRAIN PER TYPICAL TRENCH DETAIL PER DETAIL B AND DETAIL C, SHEET C4. MINIMUM PIPE SLOPE 0.5%.
- 15 PROTECT IN PLACE.
- 16 PROVIDE 9" SQUARE NDS CATCH BASIN (WITH ATRIUM GRATE)
- 17 PROVIDE TYPE II SLURRY SEAL. PROTECT ALL EXISTING IMPROVEMENTS WHEN PLACING SLURRY SEAL, PAYING PARTICULAR ATTENTION TO THE PERVIOUS CONCRETE PAVING.
- 18 REMOVE EXISTING ASPHALT AND PROTECT EXISTING AGGREGATE BASE IN PLACE. CONSTRUCT NEW ASPHALT PAVEMENT WITH ELEVATIONS TO MATCH EXISTING. NOTE, THERE MAY BE LOCATIONS WHERE AGGREGATE BASE WILL NEED TO BE ADDED OR REPLACED. CONTRACTOR TO CONTACT THE OWNER'S REPRESENTATIVE WHEN THEY BELIEVE THESE LOCATIONS HAVE BEEN ENCOUNTERED.

**CONSTRUCTION NOTES (UTILITY)**

- 1 REMOVE EXISTING "WHARF HEAD" FIRE HYDRANT ASSEMBLY. PROVIDE NEW WATER LINE, "WHARF HEAD" FIRE HYDRANT ASSEMBLY, AND BOLLARDS. SIZE TO MATCH.
- 2 ROTATE EXISTING DEWATERING WELL TO AVOID FUTURE BUILDING FOUNDATION.
- 3 REMOVE EXISTING SEWER CLEANOUT, CUT AND REMOVE CONFLICTING PORTIONS OF EXISTING ABANDONED SEWER LATERAL
- 4 PROVIDE WATER SERVICE PER DETAIL K, SHEET C4. SEE MECHANICAL PLANS FOR SIZE AND LOCATION.
- 5 PROVIDE SEWER LATERAL SERVICE PER DETAIL I AND DETAIL J, SHEET C4. CONNECT TO EXISTING SEWER CLEANOUT. SEE MECHANICAL PLANS FOR SIZE AND LOCATION.
- 6 PROVIDE DRAIN CONNECTION TO SEWER/STORM DRAIN LATERAL PER DETAIL B, SHEET C4. SEE MECHANICAL PLANS FOR SIZE AND LOCATION.

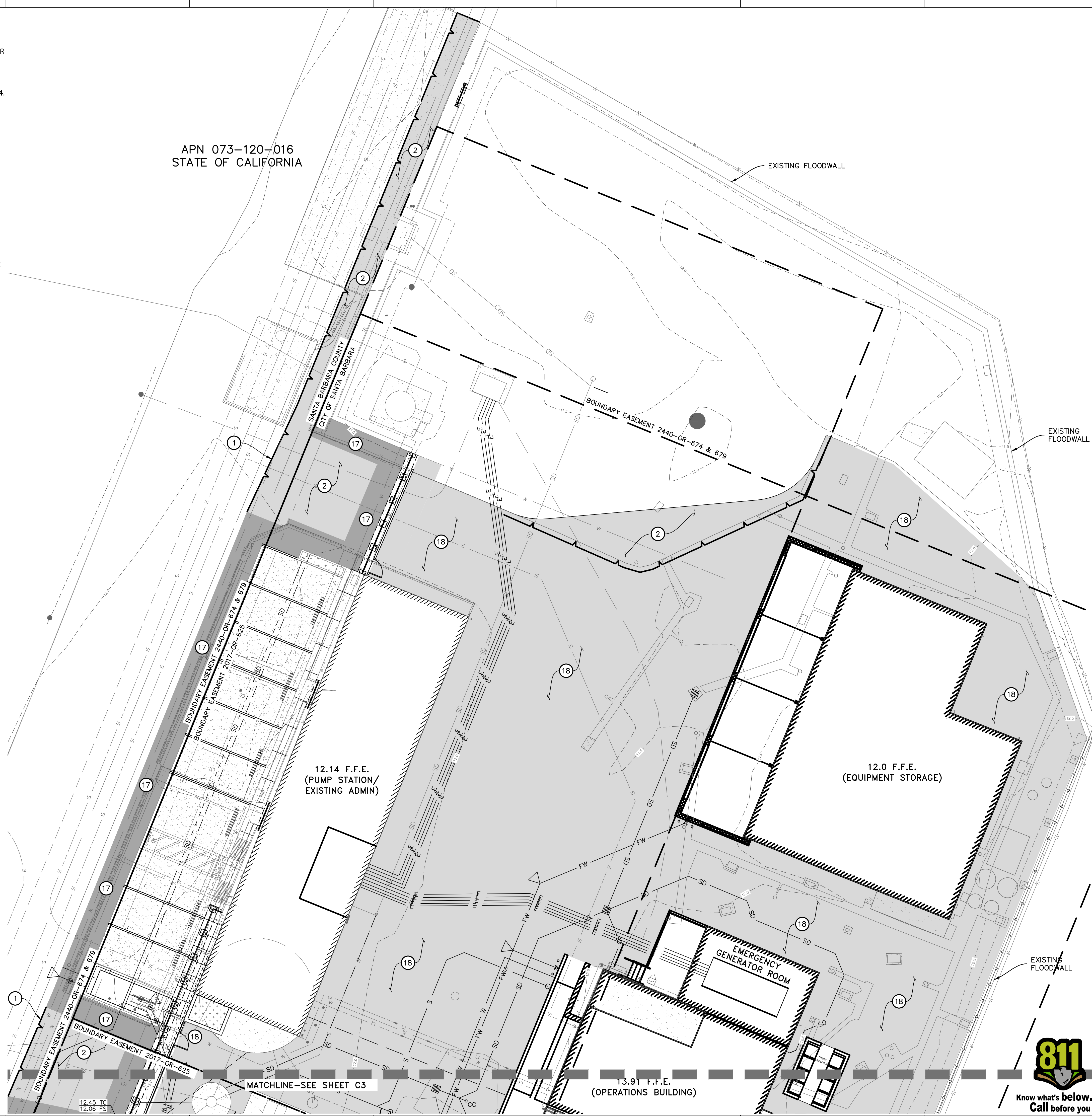
**ENVIRONMENTALLY SENSITIVE WETLANDS:** THE CONTRACTOR SHALL AVOID WORKING OUTSIDE THE FENCE LINE AND MAKE PROVISIONS TO AVOID RUNOFFS ONTO THE AREAS OUTSIDE OF THE FENCE.

**EXISTING UTILITIES:** UTILITIES AND SERVICE LINES MAY EXIST UNDER THE EXISTING BUILDING. CONTRACTOR TO DIG WITH CARE AND NOTIFY OWNER IF EXISTING UNKNOWN UTILITIES ARE ENCOUNTERED.

**GRADING & DRAINAGE:** ALL STORMWATER TO REMAIN ON SITE; DRAIN TO WET WELL.

**PROTECTION OF PERIMETER FLOODWALL:** STORM DRAINS LOCATED OUTSIDE OF SITE PERIMETER SHALL HAVE AN INTEGRAL CLOSURE VALVE. STORM DRAIN VALVE SHALL BE CLOSED DURING POTENTIAL FLOOD EVENT TO PRECLUDE STORMWATER FROM BREACHING FLOODWALL.

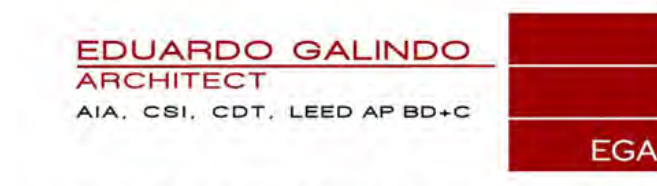
APN 073-120-016  
STATE OF CALIFORNIA



Your environmental partner since 1954

UCSB Campus  
Parking Lot 32  
Santa Barbara, CA 93106  
(p) 805 968-2617 (f) 805 562-8987

**GWSD SITE**



8733 W. SUNNYSLOPE LANE  
PEORIA, ARIZONA 85345  
480.751.8780 ed@egadesign.net

egadesign.net



2646 Santa Maria Way, Suite 107  
Santa Maria CA  
www.stantec.com

The Contractor shall verify and be responsible for all dimensions. DO NOT scale the drawing - any errors or omissions shall be reported to Stantec without delay.  
The Copyrights in all designs and drawings are the property of Stantec. Reproduction or use for any purpose other than that authorized by Stantec is forbidden.

ISSUED	REV	DATE
DART Submittal		15 May 2015
Site Development Plan 1		23 June 2015
30% Schematic Design		30 Oct. 2015
Pre-App & Architectural Board of Review Submittal		23 Apr. 2016
Architectural Board of Review Submittal		25 Jan. 2017
Architectural Board of Review Submittal		03 July 2017
Building Commercial Plan Submittal		04 Dec. 2017
Architectural Board of Review Submittal		Feb. 2023
Building Permit Review		28 Aug. 2023



GOLETA WEST  
SANITARY DISTRICT

EQUIPMENT GARAGE  
OPERATIONS BUILDING

CIVIL IMPROVEMENT PLANS

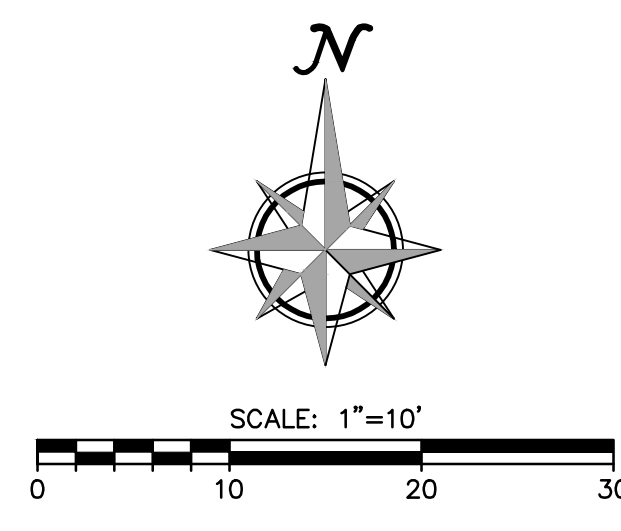
DRAWING  
**PHASE 2  
GRADING & DRAINAGE  
PLAN 1 OF 2**

As indicated

SCALE PROJECT NUMBER 2064021501

DRAWING NUMBER

**C2**



V:\2064021501\210101\Locals\Civil\Improvement Plans\2064021501\_Phase 2.dwg  
 2023/08/24 3:00 PM By: Lohr, Harper

\*VERTICAL DATUM: NAVD88