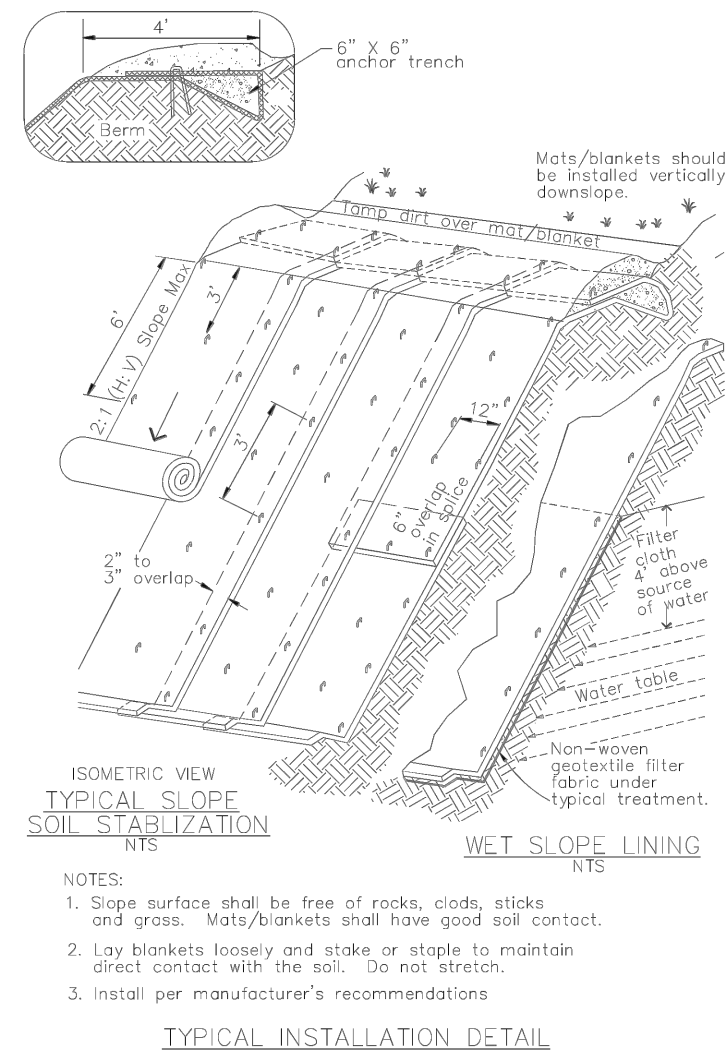
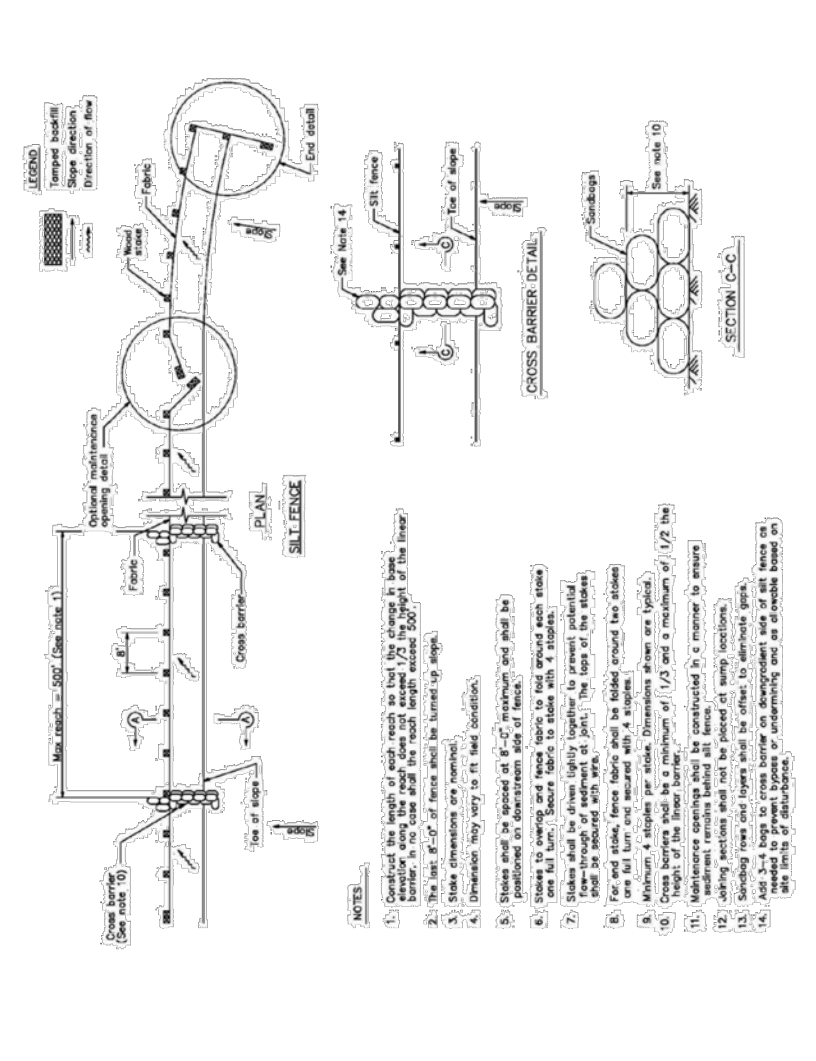


Geotextiles and Mats EC-7



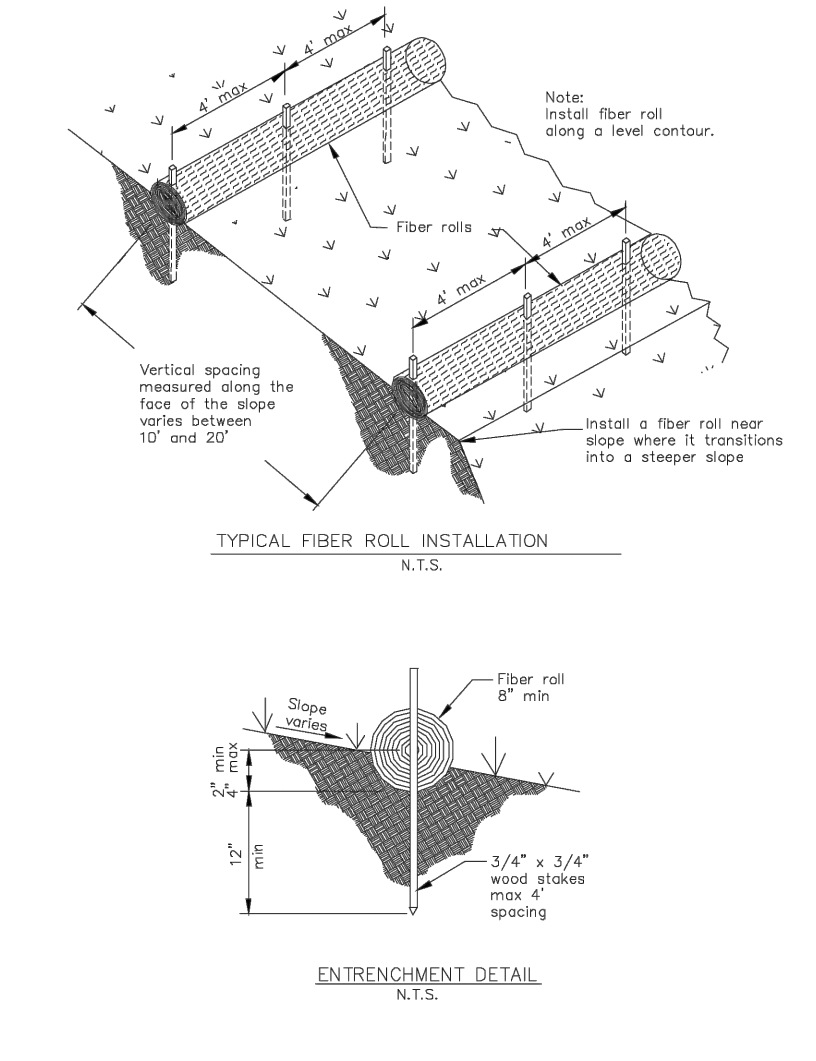
July 2012 California Stormwater BMP Handbook Construction www.casqa.org 11 of 12

Silt Fence SE-1



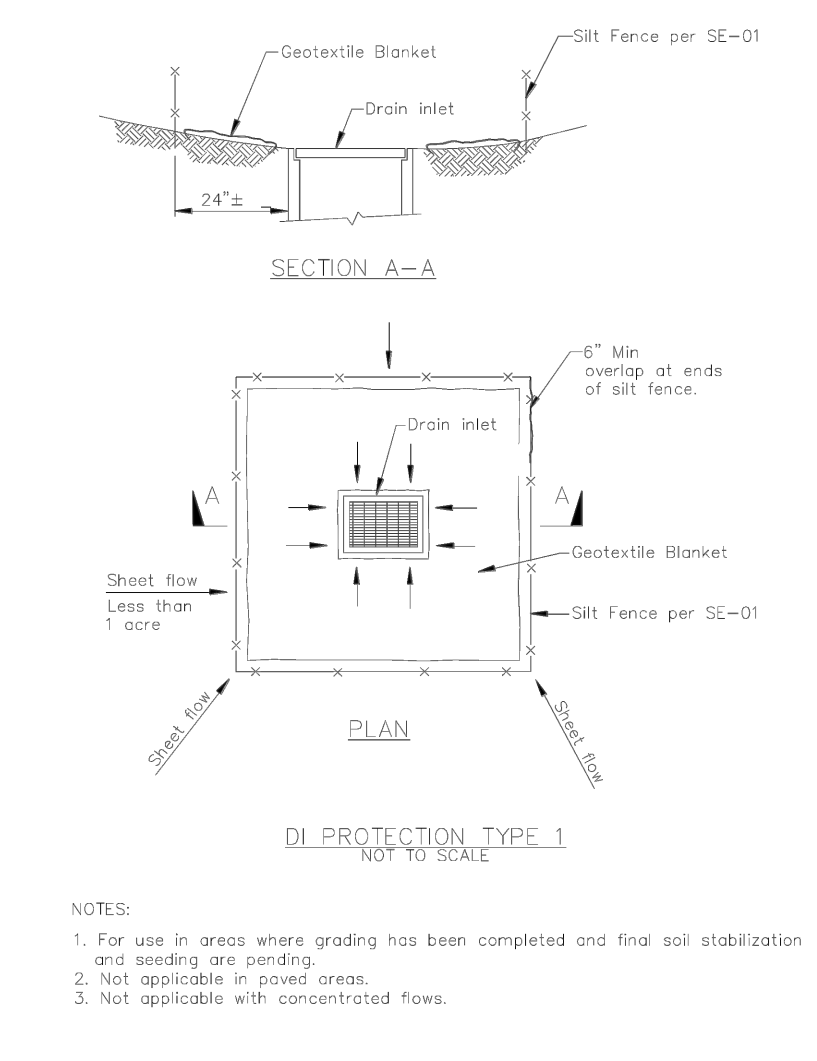
July 2012 California Stormwater BMP Handbook Construction www.casqa.org 7 of 9

Fiber Rolls SE-5



July 2012 California Stormwater BMP Handbook Construction www.casqa.org 5 of 5

Storm Drain Inlet Protection SE-10



July 2012 California Stormwater BMP Handbook Construction www.casqa.org 7 of 10

EROSION CONTROL NOTES

1. THE CONTRACTOR SHALL UTILIZE THIS PLAN ONLY AS A GUIDE TO FULFILL ALL REGULATORY AND PRACTICAL REQUIREMENTS RELATED TO EROSION CONTROL AND STORM WATER POLLUTION PREVENTION.
2. CONTRACTOR SHALL REVIEW AND PERFORM ALL STORM WATER POLLUTION PREVENTION PLAN (SWPPP) REQUIREMENTS, WHICH MAY NOT BE LIMITED TO THE FEATURES DEPICTED ON THIS PLAN.
3. THE CONTRACTOR SHALL BE RESPONSIBLE FOR MAINTAINING AND CONTROLLING ALL DRAINAGE TO AND FROM THE SITE. CONTROL OF SURFACE WATERS SHALL BE SUCH THAT EXISTING DRAINAGE PATTERNS ARE NOT DISTURBED OR ALTERED TO INCREASE THE AMOUNT AND/OR INTENSITY OF RUNOFF WATER AND SILT TO ADJACENT PRIVATE PROPERTIES, RIGHT-OF-WAYS AND EXISTING DRAINAGE STRUCTURES.
4. THE CONTRACTOR SHALL ENSURE ALL PERIMETER CONTROLS ARE IN PLACE PRIOR TO COMMENCING CONSTRUCTION. THE PROTECTION MEASURES MUST BE IN PLACE AT THE END OF EACH WORKING DAY UNTIL SITE STABILIZATION IS ACHIEVED.
5. THE CONTRACTOR SHALL ADJUST THE LIMITS OF THE PROTECTION MEASURES SHOULD THEY BE INADEQUATE TO CONTROL RUNOFF.
6. THE CONTRACTOR SHALL REMOVE SILT FROM ALL STORM DRAIN APPURTENANCES AND EROSION CONTROL DEVICES AFTER EACH RAIN.
7. THE PROTECTION MEASURES MAY BE TEMPORARILY MOVED OUT OF THE CONTRACTOR'S WAY TO FACILITATE CONSTRUCTION, PROVIDED THEY ARE REINSTALLED AT THE END OF THE WORK DAY.
8. WHEN THE NOAA FORECASTED PROBABILITY OF RAIN IS 50% OR GREATER, ALL STOCKPILED MATERIALS SHALL BE TARPED TO PREVENT EROSION. TARP SHALL BE ANCHORED WITH GRAVEL FILLED BAGS AT 8' INTERVALS.
9. STAGING, REFUELING OF EQUIPMENT AND MATERIALS STORAGE AREAS MAY CHANGE THROUGHOUT CONSTRUCTION, AS REQUIRED. THE AREAS SHALL BE INSPECTED FREQUENTLY TO ENSURE NO SPILLED HAZARDOUS MATERIALS CONTAMINATE THE GROUND, SHOULD THIS OCCUR. THE SPILL SHALL BE CLEANED UP IMMEDIATELY. REFUELING OF EQUIPMENT AND STORAGE OF HAZARDOUS MATERIALS SHALL NOT BE LOCATED NEAR STORM DRAIN INLETS OR DRAINAGE SWALES.
10. THE CONTRACTOR SHALL HIRE A CERTIFIED QUALIFIED SWPPP PRACTITIONER (OSP) TO MONITOR EROSION CONTROL WORK IN ACCORDANCE WITH THE APPROVED PLANS. THE WORK ALSO INCLUDES, BUT IS NOT LIMITED TO, INSPECTION OF EROSION CONTROL MEASURES BEFORE EACH RAINSTORM AND DURING EXTENDED RAIN EVENTS, AS WELL AS WEEKLY AND QUARTERLY MONITORING, AND FILE ANNUAL REPORTS AND NOTICE OF TERMINATION AFTER PROJECT COMPLETION AND STABILIZATION.

SEDIMENT CONTROL NOTES

1. TEMPORARY SEDIMENT CONTROL DEVICES SHOWN ON THE PLAN WHICH INTERFERE WITH THE WORK SHALL BE RELOCATED OR MODIFIED AS NEEDED AND WHEN THE INSPECTOR SO DIRECTS AS THE WORK PROGRESSES.
2. ALL LOOSE SOIL AND DEBRIS SHALL BE REMOVED FROM THE STREET AREAS DAILY.
3. STANDBY CREWS SHALL BE ALERTED BY THE PERMITEE OR CONTRACTOR FOR EMERGENCY WORK DURING RAINSTORMS.
4. VELOCITY CHECK DAMS BE PROVIDED IN ALL UNPAVED GRADED SWALES AT 50 FOOT MINIMUM INTERVALS AND AROUND ALL DROP INLETS.
5. EXCEPT WHEN THE INSPECTOR DIRECTS OTHERWISE, ALL DEVICES SHOWN SHALL BE IN PLACE AT THE END OF EACH WORKING DAY.
6. ALL BASINS AND CHECK DAMS SHALL HAVE THE DEBRIS AND SILT REMOVED AFTER EACH STORM TO RESTORE THEIR CAPACITY.
7. A STANDBY CREW FOR EMERGENCY WORK SHALL BE AVAILABLE WHEN THE NOAA FORECASTED PROBABILITY OF RAIN IS 50% OR GREATER. NECESSARY MATERIALS SHALL BE AVAILABLE ON-SITE AND STOCKPILED AT CONVENIENT LOCATIONS TO FACILITATE RAPID CONSTRUCTION OF EMERGENCY DEVICES WHEN RAIN IS IMMINENT.
8. DURING CONSTRUCTION, WASHING OF CONCRETE TRUCKS, PAINT, EQUIPMENT OR SIMILAR ACTIVITIES SHALL OCCUR ONLY IN AREAS WHERE POLLUTED WATER AND MATERIALS CAN BE CONTAINED FOR SUBSEQUENT REMOVAL FROM THE SITE. WASH WATER SHALL NOT BE DISCHARGED TO THE STORM DRAINS, STREET, DRAINAGE DITCHES OR CREEKS. AREAS DESIGNATED FOR WASHING FUNCTIONS SHALL BE AT LEAST 100 FEET FROM ANY STORM DRAIN, WATERBODY OR SENSITIVE BIOLOGICAL RESOURCES. THE LOCATION OF THE WASHOUT AREA SHALL BE CLEARLY NOTED AT THE CONSTRUCTION SITE WITH SIGNS.
9. HYDROSEED, PER CASQA BMP EC-4, AND STRAW MULCH, PER CASQA BMP EC-6, SHALL BE APPLIED TO DISTURBED AREAS AFTER 14 DAYS OF INACTIVITY UNTIL PERMANENT STABILIZATION IS ESTABLISHED. HYDROSEED MIX SHALL BE APPROVED BY THE INSPECTOR PRIOR TO APPLICATION.
10. TEMPORARY SEDIMENT BASINS, PER CASQA BMP SE-2, SHALL BE INSTALLED TO DETAIN SEDIMENT-LADEN RUNOFF PRIOR TO DISCHARGING OFF-SITE.

CASQA BMP INDEX

CALIFORNIA STORMWATER QUALITY ASSOCIATION (CASQA) CONSTRUCTION HANDBOOK, 2012. FOR DETAILED BEST MANAGEMENT PRACTICE (BMP) INSTALLATION, SEE APPENDIX "N" OF THE PROJECT SWPPP.

TEMPORARY EROSION CONTROL

- EC-1 SCHEDULING
- EC-2 PRESERVATION OF EXISTING VEGETATION
- EC-4 HYDROSEEDING
- EC-6 STRAW MULCH
- EC-15 SOIL PREPARATION - ROUGHENING

NON-STORMWATER MANAGEMENT CONTROL

- NS-1 WATER CONSERVATION PRACTICES
- NS-3 PAVING AND GRINDING OPERATIONS
- NS-6 ILLICIT CONNECTION/DISCHARGE
- NS-7 POTABLE WATER/IRRIGATION
- NS-8 VEHICLE AND EQUIPMENT CLEANING
- NS-9 VEHICLE AND EQUIPMENT FUELING
- NS-10 VEHICLE AND EQUIPMENT MAINTENANCE
- NS-11 PILE DRIVING OPERATIONS
- NS-12 CONCRETE CURING
- NS-13 CONCRETE FINISHING

TEMPORARY SEDIMENT CONTROL

- SE-1 SILT FENCE
- SE-2 SEDIMENT BASIN
- SE-5 FIBER ROLLS
- SE-6 GRAVEL BAG BERM
- SE-7 STREET SWEEPING AND VACUUMING
- SE-10 STORM DRAIN INLET PROTECTION

TRACKING CONTROL

- TC-1 STABILIZED CONSTRUCTION ENTRANCE/EXIT

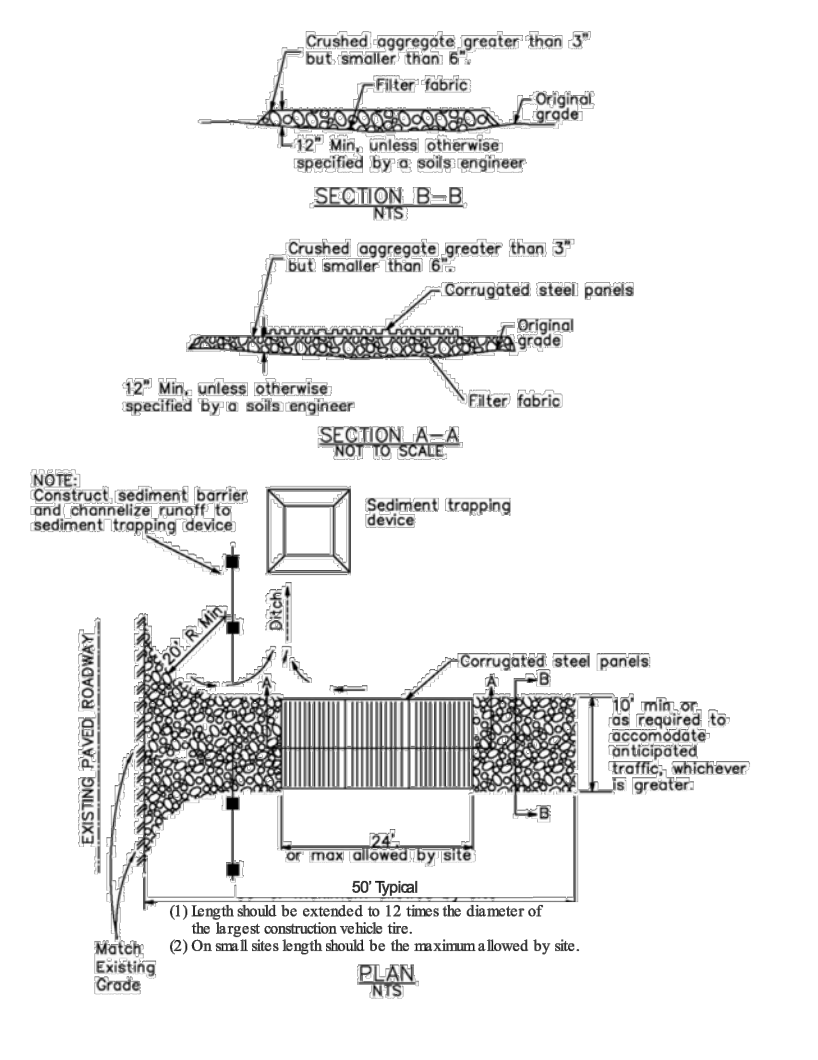
WASTE MANAGEMENT AND MATERIALS POLLUTION CONTROL

- WM-1 MATERIAL DELIVERY AND STORAGE
- WM-2 MATERIAL USE
- WM-3 STOCKPILE MANAGEMENT
- WM-4 SPILL PREVENTION AND CONTROL
- WM-5 SOLID WASTE MANAGEMENT
- WM-6 HAZARDOUS WASTE MANAGEMENT
- WM-7 CONTAMINATED SOIL MANAGEMENT
- WM-8 CONCRETE WASTE MANAGEMENT
- WM-9 SANITARY/SEPTIC WASTE MANAGEMENT
- WM-10 LIQUID WASTE MANAGEMENT

WIND EROSION CONTROL

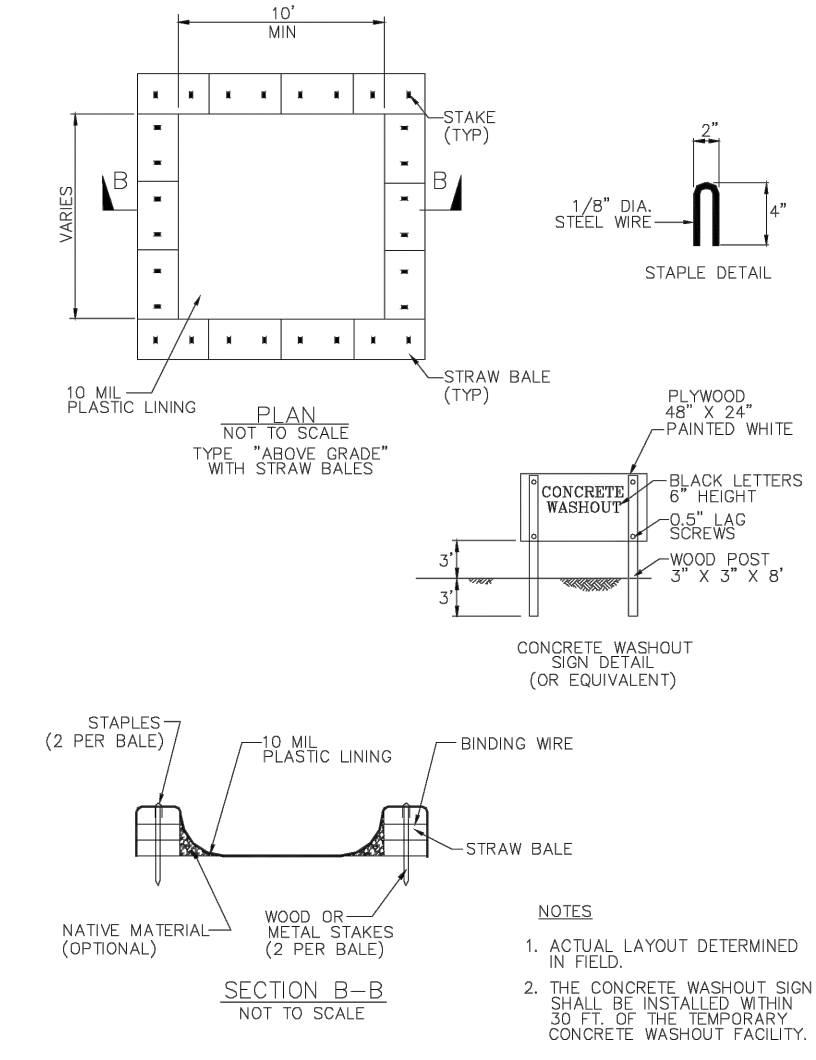
- WE-1 WIND EROSION CONTROL

Stabilized Construction Entrance/Exit TC-1



July 2012 California Stormwater BMP Handbook Construction www.casqa.org 6 of 6

Concrete Waste Management WM-8



July 2012 California Stormwater BMP Handbook Construction www.casqa.org 7 of 7



Your environmental partner since 1954

UCSB Campus
Parking Lot 32
Santa Barbara, CA 93106
(p) 805 968-2617 (f) 805 562-8987

GWSD SITE



9733 W. SUNNYSLOPE CANE
PEORIA ARIZONA 85345
480.751.8780 e@egadesign.net

egadesign.net



2646 Santa Maria Way, Suite 107
Santa Maria CA
www.stantec.com

The Contractor shall verify and be responsible for all dimensions. DO NOT scale the drawing - any errors or omissions shall be reported to Stantec without delay.

The Copyrights in all designs and drawings are the property of Stantec. Reproduction or use for any purpose other than that authorized by Stantec is forbidden.

ISSUED	REV	DATE
DART Submittal		15 May 2015
Site Development Plan 1		23 June 2015
30% Schematic Design		30 Oct. 2015
Pre-App & Architectural Board of Review Submittal		23 Apr. 2016
Architectural Board of Review Submittal		25 Jan. 2017
Architectural Board of Review Submittal		03 July 2017
Building Commercial Plan Submittal		04 Dec. 2017
Architectural Board of Review Submittal		Feb. 2023
Building Permit Review		28 Aug. 2023



GOLETA WEST
SANITARY DISTRICT

EQUIPMENT GARAGE
OPERATIONS BUILDING

CIVIL IMPROVEMENT PLANS

DRAWING

PHASE 2
EROSION CONTROL
DETAILS

As indicated

SCALE 2064021501

PROJECT NUMBER

C6

DRAWING NUMBER



Know what's below.
Call before you dig.