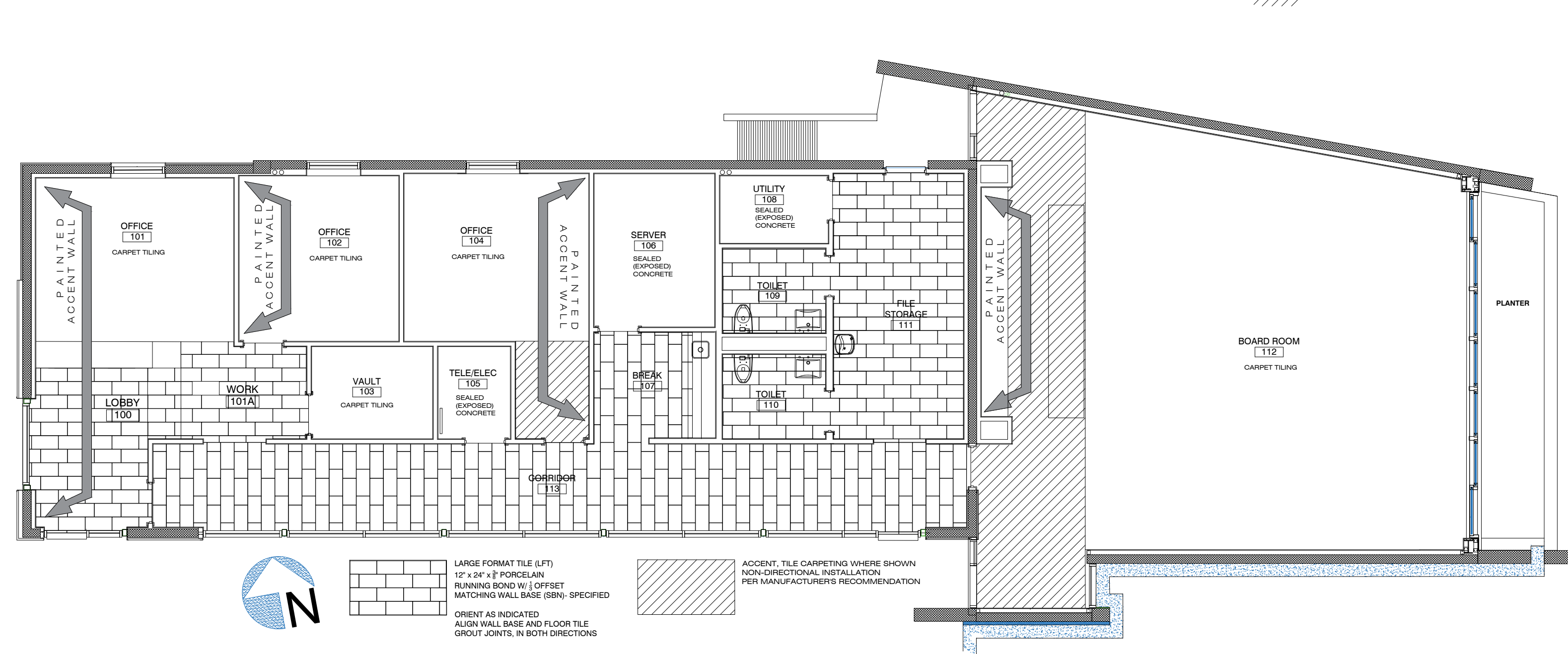




| ISSUED | REV | DATE |
|---|-----|--------------|
| DART Submittal | | 15 May 2015 |
| Site Development Plan 1 | | 23 June 2015 |
| 30% Schematic Design | | 30 Oct. 2015 |
| Pre-App & Architectural Board of Review Submittal | | 23 Apr. 2016 |
| Architectural Board of Review Submittal | | 25 Jan. 2017 |
| Architectural Board of Review Submittal | | 10 OCT 2022 |
| Building Permit Review | | 28 AUG 2023 |



ROOM FINISH SCHEDULE

| ROOM NUMBER | ROOM NAME | FLOOR FINISH | WALL - NORTH FINISH | WALL - EAST FINISH | WALL - SOUTH FINISH | WALL - WEST FINISH | CEILING FINISH | NOTES | | | | |
|-------------|--------------|--------------|---------------------|--------------------|---------------------|--------------------|----------------|--------|--------|--------|---------|---------------|
| 100 | LOBBY | LFT | --- | 3' BNT | PT | 3' BNT | PT | 3' BNT | ACNT | 3' BNT | CLOUD * | GYP BD SOFFIT |
| 101 | OFFICE | T CRPT | PT | 3' BNT | PT | VNL 1 | --- | 3' BNT | ACNT | VNL 1 | SAT * | GYP BD SOFFIT |
| 101A | WORK | LFT | PT | 3' BNT | PT | 3' BNT | --- | 3' BNT | --- | --- | SAT * | GYP BD SOFFIT |
| 102 | OFFICE | T CRPT | PT | VNL 1 | PT | VNL 1 | PT | VNL 1 | ACNT | VNL 1 | SAT | |
| 103 | VAULT | T CRPT | PT | VNL 1 | PT | VNL 1 | PT | VNL 1 | PT | VNL 1 | SAT | |
| 104 | OFFICE | T CRPT* | PT | VNL 1 | ACNT | VNL 1 | PT | VNL 1 | PT | VNL 1 | SAT | ACNT T CRPT |
| 105 | TELE./ELEC. | CONC | PT | VNL 2 | PT | VNL 2 | PT | VNL 2 | PT | VNL 2 | EXPS | |
| 106 | SERVER | CONC | PT | VNL 2 | PT | VNL 2 | PT | VNL 2 | PT | VNL 2 | PT | |
| 107 | BREAK | LFT | PT | 3' BNT | BKSPL | 3' BNT | PT | 3' BNT | PT | 3' BNT | SAT * | GYP BD SOFFIT |
| 108 | UTILITY | CONC | PT | 3' BNT | PT | VNL 2 | PT | VNL 2 | PT | VNL 2 | EXPS | |
| 109 | TOILET | LFT | WT | WNSC* | WT | WNSC* | WT | WNSC* | WT | PT | PT | PT ABV WNSC |
| 110 | TOILET | LFT | WNSC* | WT | WNSC* | WT | WNSC* | WT | WNSC* | PT | PT | PT ABV WNSC |
| 111 | FILE STORAGE | LFT | PT | 3' BNT | PT | 3' BNT | PT | PT/WT | 3' BNT | SAT | | |
| 112 | BOARD ROOM | T CRPT* | PT | 3' BNT | WD | --- | PT | 3' BNT | ACNT | 3' BNT | S LN WD | GYP BD SOFFIT |
| 113 | CORRIDOR | LFT | PT | 3' BNT | PT | 3' BNT | --- | WT | PT | 3' BNT | CLOUD * | GYP BD SOFFIT |

FINISHES (AS SPECIFIED)
FLOORING : CONC - EXPOSED SURFACE. STEEL TROWELED WITH PENETRATING SEALED FINISH
 LFT - LARGE FORMAT TILE, 12"x 24" X 3/8" GLAZED PORCELAIN W/ 3/16" GROUT JOINTS. (AS SPECIFIED)
 T CRPT - TILE CARPETING, TILE 1, AS SPECIFIED (BASIS OF DESIGN)
 ACNT T CRPT - TILE CARPETING, TILE 2, AS SPECIFIED (BASIS OF DESIGN)

WALL BASE: 3' BNT - WALL BASE BULLNOSE, 3" x 12" x 3/8" GLAZED PORCELAIN W/ 3/16" GROUT JOINTS. (AS SPECIFIED)
 VNL 1 - THERMOPLASTIC VINYL, 4" STRAIGHT (AS SPECIFIED) AT TILE CARPETING
 VNL 2 - THERMOPLASTIC VINYL, 4" COVED (AS SPECIFIED) AT EXPOSED CONCRETE
 W T - WAINSCOT TILE EXTENDS DOWN AND OVERLAPS FLOOR TILE

WALLS: PT - PAINT (TO BE SELECTED, AS SPECIFIED) SEE WALL TYPES SH. A-A400 FOR SUBSTRATE
 ACNT - ACCENT PAINT COLOR TO BE SELECTED, LOCATION AS SHOWN- CORNER TO CORNER, CEILING TO WALL BASE
 BKSPL - BACKSPASH AT CASEWORK (AS SPECIFIED)
 WNSC - WAINSCOT (AS SPECIFIED) WHERE INDICATED
 WD - WOOD STRIP ACOUSTIC ACCENT WALL BELOW WINDOW WALL
 WT - WAINSCOT TILE ACCENT

CEILING CLOUD - ACOUSTICAL TILE CEILING SYSTEM, SUSPENDED FREE FROM WALLS AT PERIMETER
 SAT - SUSPENDED ACOUSTICAL TILE SYSTEM (AS SPECIFIED)
 EXPS - EXPOSED, NO CEILING SYSTEM INSTALLED
 PT - PAINT (TO BE SELECTED, AS SPECIFIED)
 S LN WD - SUSPENDED LINEAR WOOD CEILING SYSTEM (AS SPECIFIED)

WINDOW SCHEDULE

| WINDOW NUMBER | ROOM NAME | WINDOW SIZE | FRAME | DETAIL |
|---------------|------------|-------------------|-------|----------------|
| W100 | LOBBY | 2- 2'-10" x 8'-2" | ALUM | A/ A-A300 |
| W101 | OFFICE | 4'-0" x 4'-0" | ALUM | SIM. 5/ A-A401 |
| W102 | OFFICE | 4'-0" x 4'-0" | ALUM | 5/ A-A401 |
| W104 | OFFICE | 4'-0" x 4'-0" | ALUM | 5/ A-A401 |
| W112 | BOARD ROOM | FIELD VERIFY | ALUM | SH. A-A401 |
| W112A | BOARD ROOM | 3'-4" x 4'-0" | ALUM | 13-14/ A-A401 |

DOOR SCHEDULE

| DOOR NUMBER | ROOM NAME | DOOR SIZE | TYPE | FRAME | HDW SET |
|-------------|--------------|---------------|------|-------|---------|
| 100A | LOBBY | 3'-0" x 7'-2" | A | ALUM | 1 |
| 102A | OFFICE | 3'-0" x 7'-0" | B | HM | 5 |
| 103A | VAULT | 3'-0" x 7'-0" | B | HM | 4 |
| 104A | OFFICE | 3'-0" x 7'-0" | B | HM | 5 |
| 105A | TELE./ELEC. | 3'-0" x 7'-0" | C | HM | 4 |
| 106A | SERVER | 3'-0" x 7'-0" | C | HM | 4 |
| 108A | UTILITY | 3'-0" x 7'-0" | C | HM | 4 |
| 109A | TOILET | 3'-0" x 7'-0" | B | HM | 6 |
| 110A | TOILET | 3'-0" x 7'-0" | B | HM | 6 |
| 111A | FILE STORAGE | 3'-0" x 7'-0" | C | HM | 2 |
| 112A | BOARD ROOM | 3'-0" x 7'-2" | A | ALUM | 1 |
| 112B | BOARD ROOM | 3'-0" x 7'-2" | A | ALUM | 1 |
| 112C | BOARD ROOM | 3'-0" x 7'-0" | B | HM | 5 |
| 113A | CORRIDOR | 3'-0" x 7'-0" | B | HM | 3 |
| 113B | CORRIDOR | 3'-0" x 7'-2" | A | ALUM | 1 |

DOOR TYPES:
 A - ALUMINUM FRAMED ENTRANCE IN STOREFRONT FRAMING
 B - FLUSH WOOD DOOR (AS SPECIFIED)
 C - FLUSH HOLLOW METAL DOOR (AS SPECIFIED)

OPENINGS: - 101A, 107A, 111B
 - 8'-0" FINISHED HEIGHT, WIDTH AS SHOWN ON DRAWINGS

