



District Completes Ellwood Shores Restoration Project

The Spring 1992 issue of the Collector included an update on the District's involvement in an easement clearing project in Ellwood Shores. As you might recall, the project involved the District's removal of eucalyptus trees that had been allowed to grow over a 15 inch clay trunk line that runs through this area. At the time the sewer was laid there were no trees in the immediate area.

The easement clearing originally took place in December 1990 and was

"Nothing is so fatiguing as the eternal hanging on of an uncompleted task."

-William James

abruptly halted by the County as a result of angry protests from area residents. Since that time the contingent liability for

excessive County Resource Management permit fees, cleanup and legal fees for this project has exceeded \$350,000. The taxpayers have paid quite dearly for the clearing of just *one* District easement.

This summer the District hired Acacia Landscaping to satisfy the requirements of the County mandated mitigation plan. The project was completed October 6, 1992. A three year maintenance period will begin November 1, 1992. 

BOARD OF DIRECTORS
Kenneth A. Hendrickson
President

Harvey M. Gish
Vice President

Michael E. Boyd
Deborah Lacerenza
Richard H. Smith

Diane Powers
Secretary of the Board

GENERAL MANAGER
Harold R. Vinson

NEWSLETTER STAFF
Diane Powers
Editor / Writer

Carrie Kennedy
Writer

J. Jones Design
Graphic Design & Production

BULK RATE
U. S. POSTAGE
PAID
SANTA BARBARA, CA
Permit No. 606



Goleta West Sanitary District
P.O. Box 4
Goleta, CA 93116-0004



THE GOLETA WEST COLLECTOR

District Completes Phase I of Isla Vista Resewering Project

The roar of construction equipment has finally left the Isla Vista area. After four months, Phase One of the Isla Vista Sewer Replacement Project is complete.

Low flows, shallow lines and roots have plagued this area for several years. It is anticipated there will be thirteen additional phases to the project, each bringing much needed relief to

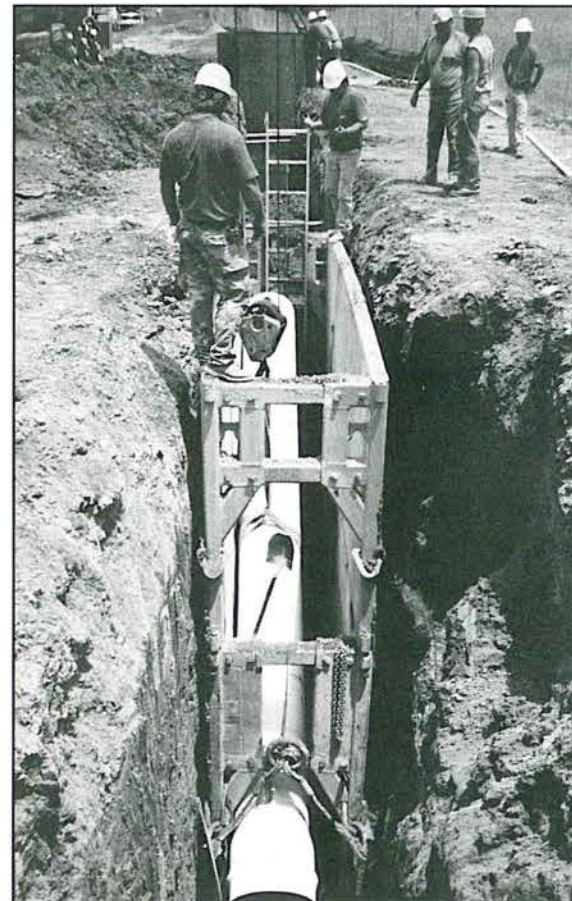
the Isla Vista sewer system. These phases will be constructed during the summer months when schools are closed until completion of the project. Construction will be financed through Goleta West Sanitary District capital reserves.

Phase One began on July 7, 1992. Large excavators were used to dig down to depths of twenty-six feet. To bring this into perspective, consider the average 8 foot ceiling and multiply by three! Trench boxes or shields (thick metal boxes with the ends partially open) protected pipelayers from the trench sides caving in on them. Large volumes of groundwater were encountered in the trenches requiring pumps along with dewatering wells to bring the water levels down. This water made pipeline construction difficult and time consuming.

Vitrified clay, ductile iron and PVC pipe was used throughout the project. Special bedding was placed so the pipe would not settle in the unstable soil conditions around Mesa and Los Carneros roads. A geotechnical consultant was hired to insure that the proper bedding was used during this phase of construction.

While placing the sections of pipe crossing Los Carneros Road, the road was closed. Work continued in shifts around the

(continued on page 2)



20" PVC pipe is being lowered into a trench shield as part of the Los Carneros Road trunk sewer system.

IN THIS ISSUE...

District Completes Phase One of Isla Vista Resewering Project 1-2

District Raises Rates to Maintain Level of Service 3

Employee of the Year 1992 3

District Completes Ellwood Shores Restoration Project .. 4

District Completes Phase I of Isla Vista Resewering Project... (continued)

(continued from page 1)

clock to enable the road to be reopened as soon as possible. Traffic was routed through the University and to Storke Road. The various governmental agencies involved in the project and the contractor worked together to keep the project moving ahead and complaints to a minimum. Weekly site meetings were also held to discuss progress and address any concerns.



Steel pipe is being lowered into a drilled shaft for shoring during manhole construction in Los Carneros Road.



20" PVC pipe and a 36" diameter casing is being set in a trench in Los Carneros road.

A sincere "Thank You" is extended to all those affected by the construction project. The District appreciates the patience and cooperation exhibited by the general public.

Anyone interested in viewing the master plan for resewering the Isla Vista area, may do so at the District office. 🗑️

District Raises Rates to Maintain Level of Service

It has been four years since the Goleta West Sanitary District changed its sewer service charge rate structure. As many of you are aware, the State has shifted property taxes previously allocated to counties, cities and special districts to the schools. This shift is in accordance with Senate Bills (SB) 844 and SB 617 and represents a tax reduction to the District of \$341,040 or 10% of total revenues.

In light of this reduction the Board of Directors of the Goleta West Sanitary District approved to increase the monthly sewer service charge per "Equivalent Residential Unit (ERU)" \$2.71 per month for a total monthly rate of \$11.61 which is still the lowest rate in the Tri-Counties area. The new rate insures the continuation of the District street sweeping program as well as the ability of the District

"It is not who is right, but what is right, that is of importance."

-Thomas Huxley

to maintain its high level of service and maintenance.

The Goleta West Sanitary District understands the importance of sound financial and long-range planning. Future growth in the Goleta Valley will require that funds be allocated for the upgrade of District facilities and additional capacity rights at the treatment plant. 🗑️

Employee of the Year - 1992

John Murray was awarded Employee of the Year at the District's Annual Safety Dinner...

John has been an employee of the Goleta West Sanitary District since 1981. He is responsible for the District street sweeping service and maintenance. During his years with the District, John has gained valuable experience by working many District jobs. John is a long time resident of Carpinteria and enjoys surfing, surfboard building, bike riding, camping and snow skiing. John attended Carpinteria High School and Santa Barbara City College where he majored in Geology. John and his wife Debbie have two sons, Matthew and Justin. 🗑️

